

XPA (Phospho-Ser196) Antibody

Catalog No: #12655

Package Size: #12655-1 50ul #12655-2 100ul

Orders: order@signalwayantibody.comSupport: tech@signalwayantibody.com

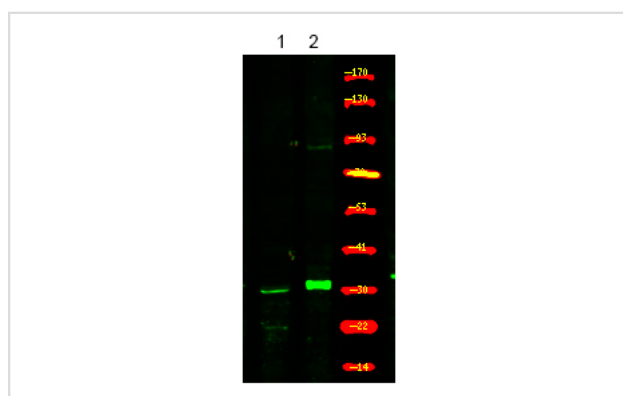
Description

Product Name	XPA (Phospho-Ser196) Antibody
Host Species	Rabbit
Clonality	Polyclonal
Purification	Antibodies were produced by immunizing rabbits with synthetic phosphopeptide and KLH conjugates. Antibodies were purified by affinity-chromatography using epitope-specific phosphopeptide. Non-phospho specific antibodies were removed by chromatography using non-phosphopeptide.
Applications	WB
Species Reactivity	Hu Ms
Specificity	XPA (Phospho-Ser196) Antibody detects endogenous levels of XPA only when phosphorylated at Ser196
Immunogen Type	Peptide
Immunogen Description	A synthesized peptide derived from human XPA (Phospho-Ser196)
Target Name	XPA
Modification	Phospho
Other Names	XPA, XP1, XPAC, Excision repair-controlling
Accession No.	Swiss-Prot#: P23025NCBI Gene ID: 7507
Target Species	human
Calculated MW	40kd
Concentration	1.0mg/ml
Formulation	Rabbit IgG in phosphate buffered saline (without Mg ²⁺ and Ca ²⁺), pH 7.4, 150mM NaCl, 0.02% sodium azide and 50% glycerol.
Storage	Store at -20°C

Application Details

Western blotting: 1:1000

Images



Western Blot analysis of lysates of 1. Hela cell and 2. Hela cell Serum-free treated, using primary antibody at 1:1000 dilution.

Note: This product is for in vitro research use only and is not intended for use in humans or animals.