

## PFKFB2 (Phospho-Ser466) Antibody

Catalog No: #12663



Package Size: #12663-1 50ul #12663-2 100ul

Orders: [order@signalwayantibody.com](mailto:order@signalwayantibody.com)Support: [tech@signalwayantibody.com](mailto:tech@signalwayantibody.com)

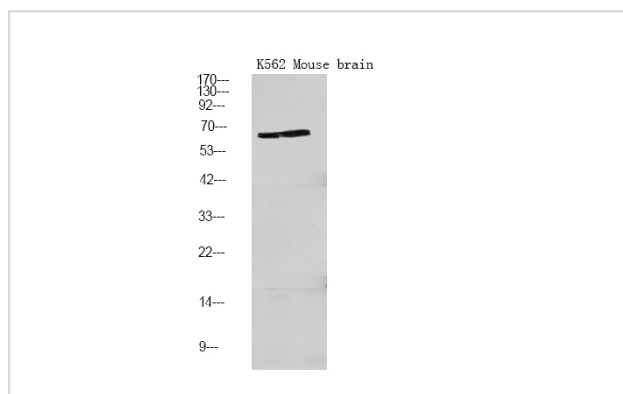
## Description

Product Name	PFKFB2 (Phospho-Ser466) Antibody
Host Species	Rabbit
Clonality	Polyclonal
Purification	Antibodies were produced by immunizing rabbits with synthetic phosphopeptide and KLH conjugates. Antibodies were purified by affinity-chromatography using epitope-specific phosphopeptide. Non-phospho specific antibodies were removed by chromatography using non-phosphopeptide.
Applications	WB
Species Reactivity	Hu Ms Rt
Specificity	PFKFB2 (Phospho-Ser466) Antibody detects endogenous levels of PFKFB2 only when phosphorylated at Ser466
Immunogen Type	Peptide
Immunogen Description	A synthesized peptide derived from human PFKFB2 (Phospho-Ser466)
Target Name	PFKFB2
Modification	Phospho
Other Names	PFKFB2, 6PF-2-K/Fru-2,6-P2ase 2, PFK-2/FBPase-2, PFK/FBPase 2, PFKFB, cardiac
Accession No.	Swiss-Prot#: O60825NCBI Gene ID: 5208
Target Species	human
Calculated MW	58kd
Concentration	1.0mg/ml
Formulation	Rabbit IgG in phosphate buffered saline (without Mg <sup>2+</sup> and Ca <sup>2+</sup> ), pH 7.4, 150mM NaCl, 0.02% sodium azide and 50% glycerol.
Storage	Store at -20°C

## Application Details

Western blotting: 1:1000

## Images



Western Blot analysis of lysates of K562 cell and Mouse brain, using primary antibody at 1:1000 dilution.

---

Note: This product is for in vitro research use only and is not intended for use in humans or animals.