

GRK1/2 (Phospho-Tyr13) Antibody

Catalog No: #12683



Package Size: #12683-1 50ul #12683-2 100ul

Orders: order@signalwayantibody.com
Support: tech@signalwayantibody.com

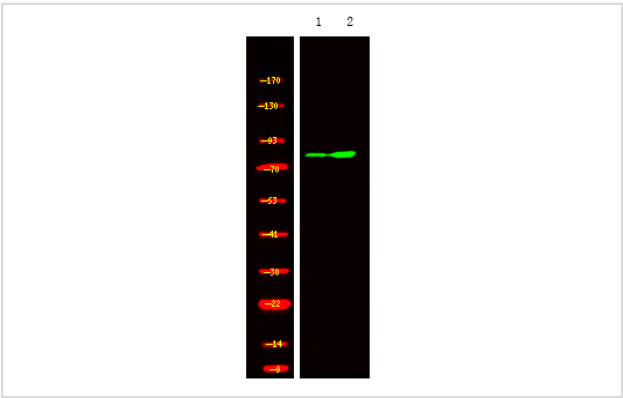
Description

Product Name	GRK1/2 (Phospho-Tyr13) Antibody
Host Species	Rabbit
Clonality	Polyclonal
Purification	Antibodies were produced by immunizing rabbits with synthetic phosphopeptide and KLH conjugates. Antibodies were purified by affinity-chromatography using epitope-specific phosphopeptide. Non-phospho specific antibodies were removed by chromatography using non-phosphopeptide.
Applications	WB
Species Reactivity	Hu Ms Rt
Specificity	GRK1/2 (Phospho-Tyr13) Antibody detects endogenous levels of GRK1/2 only when phosphorylated at Tyr13
Immunogen Type	Peptide
Immunogen Description	A synthesized peptide derived from human GRK1/2 (Phospho-Tyr13)
Target Name	GRK1/2
Modification	Phospho
Other Names	ADRBK1, BARK1, Beta-ARK-1, BETA-ARK1, BARK, Betaark1, GRK2
Accession No.	Swiss-Prot#: P25098/P35626NCBI Gene ID: 156/157
Target Species	human
Calculated MW	79kd
Concentration	1.0mg/ml
Formulation	Rabbit IgG in phosphate buffered saline (without Mg2+ and Ca2+), pH 7.4, 150mM NaCl, 0.02% sodium azide and 50% glycerol.
Storage	Store at -20°C

Application Details

Western blotting: 1:1000

Images



Western Blot analysis of lysates of 1. Jurkat cell and 2. Jurkat cell treated with 100ng/mL LPS for 30min, using primary antibody at 1:1000 dilution.

Note: This product is for in vitro research use only and is not intended for use in humans or animals.