

G3BP-1 (Phospho-Ser149) Antibody

Catalog No: #12756



Package Size: #12756-1 50ul #12756-2 100ul

Orders: order@signalwayantibody.comSupport: tech@signalwayantibody.com

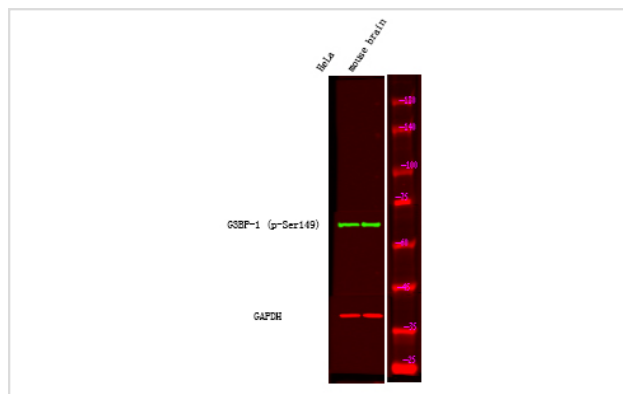
Description

| | |
|-----------------------|---|
| Product Name | G3BP-1 (Phospho-Ser149) Antibody |
| Host Species | Rabbit |
| Clonality | Polyclonal |
| Purification | Antibodies were produced by immunizing rabbits with synthetic phosphopeptide and KLH conjugates. Antibodies were purified by affinity-chromatography using epitope-specific phosphopeptide. Non-phospho specific antibodies were removed by chromatography using non-phosphopeptide. |
| Applications | WB |
| Species Reactivity | Hu Ms Rt |
| Specificity | G3BP-1 (Phospho-Ser149) Antibody detects endogenous levels of G3BP-1 only when phosphorylated at Ser149 |
| Immunogen Type | Peptide |
| Immunogen Description | A synthesized peptide derived from human G3BP-1 (Phospho-Ser149) |
| Target Name | G3BP-1 |
| Modification | Phospho |
| Other Names | G3BP1, HDH-VIII, G3BP-1, G3BP, GAP binding protein, HDH VIII |
| Accession No. | Swiss-Prot#: Q13283NCBI Gene ID: 10146 |
| Target Species | human |
| Calculated MW | 60kd |
| Concentration | 1.0mg/ml |
| Formulation | Rabbit IgG in phosphate buffered saline (without Mg ²⁺ and Ca ²⁺), pH 7.4, 150mM NaCl, 0.02% sodium azide and 50% glycerol. |
| Storage | Store at -20°C |

Application Details

Western blotting: 1:1000

Images



Western Blot analysis of lysates of HeLa cell and mouse brain tissue, using primary antibody at 1:1000 dilution.

Note: This product is for in vitro research use only and is not intended for use in humans or animals.