

INCENP (Phospho-Thr59) Antibody

Catalog No: #12762



Package Size: #12762-1 50ul #12762-2 100ul

Orders: order@signalwayantibody.comSupport: tech@signalwayantibody.com

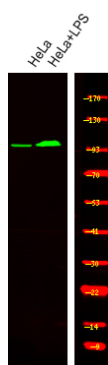
Description

Product Name	INCENP (Phospho-Thr59) Antibody
Host Species	Rabbit
Clonality	Polyclonal
Purification	Antibodies were produced by immunizing rabbits with synthetic phosphopeptide and KLH conjugates. Antibodies were purified by affinity-chromatography using epitope-specific phosphopeptide. Non-phospho specific antibodies were removed by chromatography using non-phosphopeptide.
Applications	WB
Species Reactivity	Hu Ms Rt
Specificity	INCENP (Phospho-Thr59) Antibody detects endogenous levels of INCENP only when phosphorylated at Thr59
Immunogen Type	Peptide
Immunogen Description	A synthesized peptide derived from human INCENP (Phospho-Thr59)
Target Name	INCENP
Modification	Phospho
Other Names	INCENP, Chromosomal passenger protein, Inner centromere protein
Accession No.	Swiss-Prot#: Q9NQS7NCBI Gene ID: 3619
Target Species	human
Calculated MW	105kd
Concentration	1.0mg/ml
Formulation	Rabbit IgG in phosphate buffered saline (without Mg ²⁺ and Ca ²⁺), pH 7.4, 150mM NaCl, 0.02% sodium azide and 50% glycerol.
Storage	Store at -20°C

Application Details

Western blotting: 1:1000

Images



Western Blot analysis of lysates of HeLa and HeLa treated with LPS, using primary antibody at 1:1000 dilution.

Published Papers

et al., Wip1 controls the translocation of the chromosomal passenger complex to the central spindle for faithful mitotic exit. In Cell Mol Life Sci on 2020 Oct 16 by Xianghua Zhang, Ji Eun Park, et al..PMID:33067654, , (2020)

[PMID:33067654](#)

Note: This product is for in vitro research use only and is not intended for use in humans or animals.