

# KRAS Polyclonal Antibody

Catalog No: #27759



Package Size: #27759-1 50ul #27759-2 100ul

Orders: [order@signalwayantibody.com](mailto:order@signalwayantibody.com)  
Support: [tech@signalwayantibody.com](mailto:tech@signalwayantibody.com)

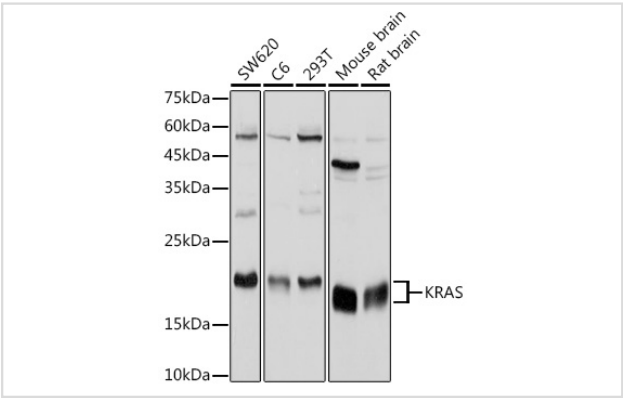
## Description

Product Name	KRAS Polyclonal Antibody
Host Species	Rabbit
Clonality	Polyclonal
Isotype	IgG
Purification	Affinity purification
Applications	WB,IF
Species Reactivity	Human,Mouse,Rat
Immunogen Description	Recombinant fusion protein of human KRAS (NP_004976.2).
Other Names	KRAS;C-K-RAS;CFC2;K-RAS2A;K-RAS2B;K-RAS4A;K-RAS4B;KI-RAS;KRAS1;KRAS2;NS;NS3;RALD;RASK 2;c-Ki-ras2
Accession No.	Uniprot:P01116GenelD:3845
Calculated MW	Refer to figures
SDS-PAGE MW	Refer to figures
Formulation	PBS with 0.02% sodium azide,50% glycerol,pH7.3.
Storage	Store at -20°C. Avoid freeze / thaw cycles.

## Application Details

WB 1:500 - 1:2000IF 1:50 - 1:200

## Images



Western blot analysis of extracts of various cell lines, using KRAS antibody.

## Background

This gene, a Kirsten ras oncogene homolog from the mammalian ras gene family, encodes a protein that is a member of the small GTPase superfamily. A single amino acid substitution is responsible for an activating mutation. The transforming protein that results is implicated in various malignancies, including lung adenocarcinoma, mucinous adenoma, ductal carcinoma of the pancreas and colorectal carcinoma. Alternative splicing leads to variants encoding two isoforms that differ in the C-terminal region.

---

Note: This product is for in vitro research use only and is not intended for use in humans or animals.