

KLHL3 Antibody

Catalog No: #47830



Package Size: #47830-1 50ul #47830-2 100ul

Orders: [order@signalwayantibody.com](mailto:order@signalwayantibody.com)  
Support: [tech@signalwayantibody.com](mailto:tech@signalwayantibody.com)

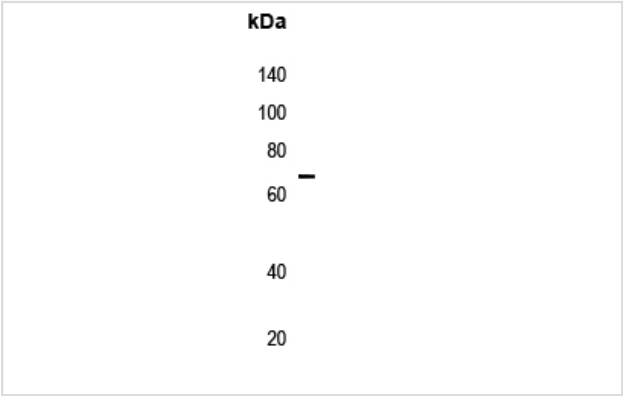
Description

Product Name	KLHL3 Antibody
Host Species	Rabbit
Clonality	Polyclonal
Purification	The antibody was purified by immunogen affinity chromatography.
Applications	WB IHC IF
Species Reactivity	Hu
Specificity	Recognizes endogenous levels of KLHL3 protein.
Immunogen Description	KLH-conjugated synthetic peptide encompassing a sequence within the N-term region of human KLHL3.
Target Name	KLHL3
Other Names	KIAA1129; Kelch-like protein 3
Accession No.	Swiss-Prot#:Q9UH77NCBI Gene ID:26249
Calculated MW	65KD
Concentration	1 mg/ml
Formulation	Rabbit IgG in phosphate buffered saline (without Mg2+ and Ca2+), pH 7.4, 150mM NaCl, 0.02% sodium azide and 50% glycerol.
Storage	Store at -20°C

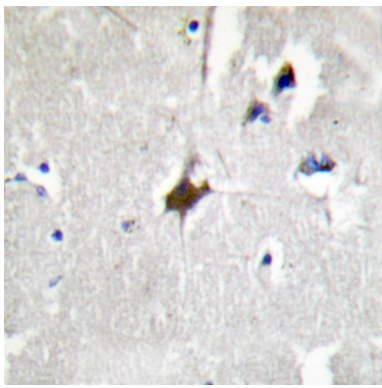
Application Details

Western blotting:1:500 - 1:1000Immunohistochemistry:1:50 - 1:100Immunofluorescence:1:100 - 1:300

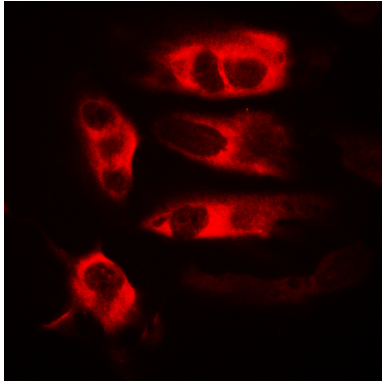
Images



Western blot analysis of GPR180 expression in Jurkat, HEK293T whole cell lysates.



Immunohistochemical analysis of KLHL3 staining in human brain formalin fixed paraffin embedded tissue section. The section was then incubated with the antibody at room temperature and detected using an HRP conjugated compact polymer system. DAB was used as the chromogen. The section was then counterstained with haematoxylin and mounted with DPX.



Immunofluorescent analysis of KLHL3 staining in A549 cells. Formalin-fixed cells were permeabilized with 0.1% Triton X-100 in TBS for 5-10 minutes and blocked with 3% BSA-PBS for 30 minutes at room temperature. Cells were probed with the primary antibody in 3% BSA-PBS and incubated overnight at 4 C in a humidified chamber. Cells were washed with PBST and incubated with Alexa Fluor 647-conjugated secondary antibody (red) in PBS at room temperature in the dark.

---

Note: This product is for in vitro research use only and is not intended for use in humans or animals.