

# KCNAB3 Antibody

Catalog No: #47870



Package Size: #47870-1 50ul #47870-2 100ul

Orders: [order@signalwayantibody.com](mailto:order@signalwayantibody.com)  
Support: [tech@signalwayantibody.com](mailto:tech@signalwayantibody.com)

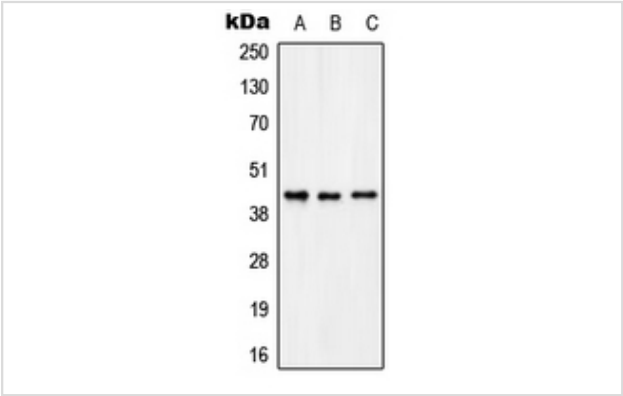
## Description

Product Name	KCNAB3 Antibody
Host Species	Rabbit
Clonality	Polyclonal
Purification	The antibody was purified by immunogen affinity chromatography.
Applications	WB IHC
Species Reactivity	Hu,Rt
Specificity	Recognizes endogenous levels of KCNAB3 protein.
Immunogen Description	KLH-conjugated synthetic peptide encompassing a sequence within the C-term region of human KCNAB3.
Target Name	KCNAB3
Other Names	KCNA3B; Voltage-gated potassium channel subunit beta-3; K(+) channel subunit beta-3; Kv-beta-3
Accession No.	Swiss-Prot#:O43448NCBI Gene ID:9196
Calculated MW	44KD
Concentration	1 mg/ml
Formulation	Rabbit IgG in phosphate buffered saline (without Mg2+ and Ca2+), pH 7.4, 150mM NaCl, 0.02% sodium azide and 50% glycerol.
Storage	Store at -20°C

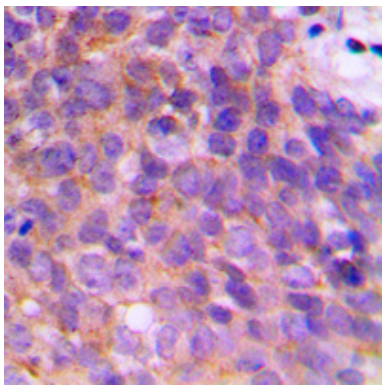
## Application Details

Western blotting:1:500 - 1:1000Immunohistochemistry:1:50 - 1:100

## Images



Western blot analysis of MYO10 expression in HeLa, A2780, C6, NIH3T3 whole cell lysates.



Immunohistochemical analysis of KCNAB3 staining in human breast cancer formalin fixed paraffin embedded tissue section. The section was then incubated with the antibody at room temperature and detected using an HRP conjugated compact polymer system. DAB was used as the chromogen. The section was then counterstained with haematoxylin and mounted with DPX.

---

Note: This product is for in vitro research use only and is not intended for use in humans or animals.