

# KLF10/11 Antibody

Catalog No: #47895



Package Size: #47895-1 50ul #47895-2 100ul

Orders: [order@signalwayantibody.com](mailto:order@signalwayantibody.com)  
Support: [tech@signalwayantibody.com](mailto:tech@signalwayantibody.com)

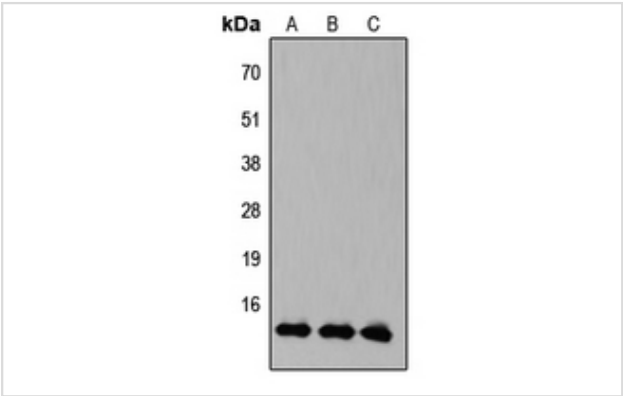
## Description

Product Name	KLF10/11 Antibody
Host Species	Rabbit
Clonality	Polyclonal
Purification	The antibody was purified by immunogen affinity chromatography.
Applications	WB IHC
Species Reactivity	Hu,Ms,Rt
Specificity	Recognizes endogenous levels of KLF10/11 protein.
Immunogen Description	KLH-conjugated synthetic peptide encompassing a sequence within the C-term region of human KLF10/11.
Target Name	KLF10; KLF11
Other Names	KLF10; TIEG; TIEG1; Krueppel-like factor 10; EGR-alpha; Transforming growth factor-beta-inducible early growth response protein 1; TGFB-inducible early growth response protein 1; TIEG-1; KLF11; FKLF; TIEG2; Krueppel-like factor 11; Transforming growth factor-beta-inducible early growth response protein 2; TGFB-inducible early growth response protein 2; TIEG-2
Accession No.	Swiss-Prot#:Q13118; O14901NCBI Gene ID:7071; 8462
Calculated MW	52KD
Concentration	1 mg/ml
Formulation	Rabbit IgG in phosphate buffered saline (without Mg2+ and Ca2+), pH 7.4, 150mM NaCl, 0.02% sodium azide and 50% glycerol.
Storage	Store at -20°C

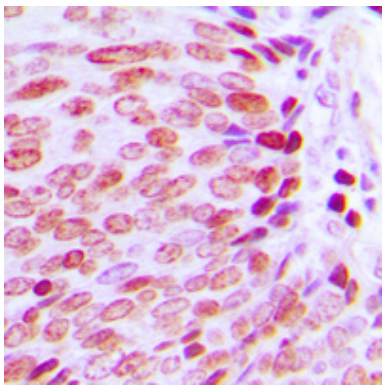
## Application Details

Western blotting:1:500 - 1:1000Immunohistochemistry:1:50 - 1:100

## Images



Western blot analysis of Frizzled 1/2/7 expression in HeLa whole cell lysates.



Immunohistochemical analysis of KLF10/11 staining in human prostate cancer formalin fixed paraffin embedded tissue section. The section was then incubated with the antibody at room temperature and detected using an HRP conjugated compact polymer system. DAB was used as the chromogen. The section was then counterstained with haematoxylin and mounted with DPX.

---

Note: This product is for in vitro research use only and is not intended for use in humans or animals.