

## GPR26 Antibody

Catalog No: #44967



Package Size: #44967-1 50ul #44967-2 100ul

Orders: [order@signalwayantibody.com](mailto:order@signalwayantibody.com)Support: [tech@signalwayantibody.com](mailto:tech@signalwayantibody.com)

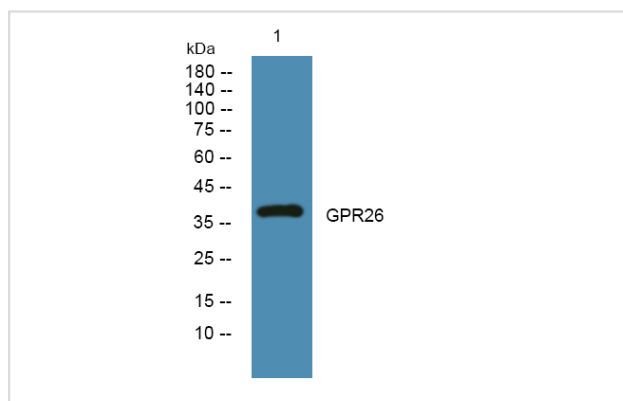
## Description

Product Name	GPR26 Antibody
Host Species	Rabbit
Clonality	Polyclonal
Purification	Rabbit IgG in phosphate buffered saline , pH 7.4, 150mM NaCl, 0.02% sodium azide and 50% glycerol.
Applications	WB
Species Reactivity	Hu Ms Rt
Specificity	GPR26antibody detects endogenous levels of total?GPR26
Immunogen Type	Peptide
Immunogen Description	A synthesized peptide derived from human GPR26
Target Name	GPR26
Other Names	AXOR49 antibody DKFZp761H2121 antibody FLJ33774 antibody  G protein-coupled receptor 26 antibody G protein-coupled receptor 26 antibody G protein-coupled receptor GPR26 antibody G-protein coupled receptor 26 antibody Gpr26 antibody GPR26_HUMAN antibody MGC1382
Accession No.	Swiss-Prot#: Q8NDV2NCBI Gene ID:2849
Calculated MW	38 kDa
Concentration	1.0mg/mL
Formulation	Rabbit IgG in phosphate buffered saline , pH 7.4, 150mM NaCl, 0.02% sodium azide and 50% glycerol.
Storage	Store at -20°C

## Application Details

Western blotting:□ 1:500-1:2000

## Images



Western blot analysis of lysates from A431 cells, primary antibody was diluted at 1:1000, 4° over night

Note: This product is for in vitro research use only and is not intended for use in humans or animals.