

KNTC1 Polyclonal Antibody

Catalog No: #27879

Package Size: #27879-1 50ul #27879-2 100ul

Orders: order@signalwayantibody.comSupport: tech@signalwayantibody.com

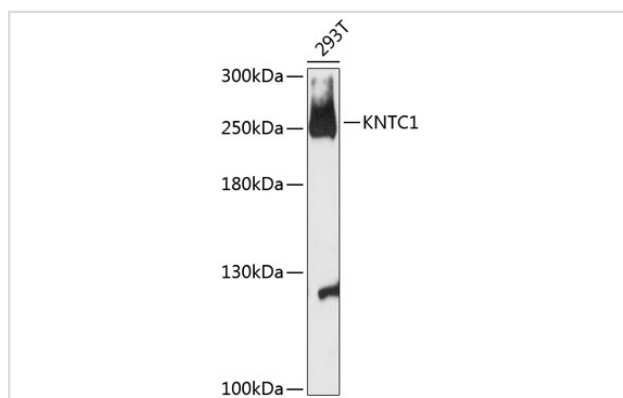
Description

Product Name	KNTC1 Polyclonal Antibody
Host Species	Rabbit
Clonality	Polyclonal
Isotype	IgG
Purification	Affinity purification
Applications	WB
Species Reactivity	Human,Rat
Immunogen Description	Recombinant fusion protein of human KNTC1 (NP_055523.1).
Other Names	KNTC1; ROD; kinetochore associated 1
Accession No.	Swiss-Prot#:P50748NCBI Gene ID:9735
Calculated MW	250kDa
Formulation	Avoid freeze / thaw cycles. Buffer: PBS with 50% glycerol, pH7.4.
Storage	Store at -20°C

Application Details

WB □ 1:500 - 1:2000

Images



Western blot analysis of extracts of 293T cells, using KNTC1 antibody at 1:3000 dilution.

Background

This gene encodes a protein that is one of many involved in mechanisms to ensure proper chromosome segregation during cell division. Experimental evidence indicated that the encoded protein functioned in a similar manner to that of the *Drosophila* rough deal protein.

Note: This product is for in vitro research use only and is not intended for use in humans or animals.