

# YWHAZ Polyclonal Antibody

Catalog No: #27987



Package Size: #27987-1 50ul #27987-2 100ul

Orders: [order@signalwayantibody.com](mailto:order@signalwayantibody.com)  
Support: [tech@signalwayantibody.com](mailto:tech@signalwayantibody.com)

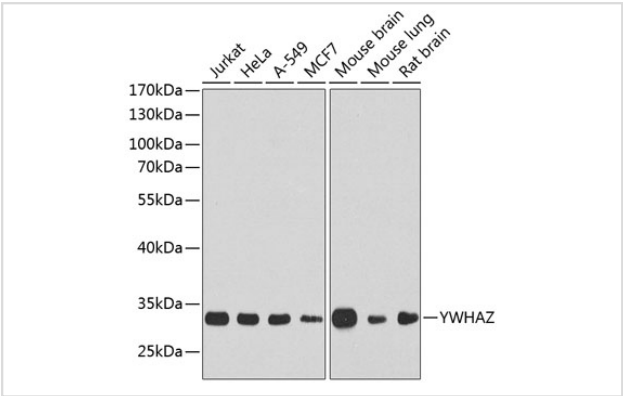
## Description

Product Name	YWHAZ Polyclonal Antibody
Host Species	Rabbit
Clonality	Polyclonal
Isotype	IgG
Purification	Affinity purification
Applications	WB
Species Reactivity	Human,Mouse,Rat
Immunogen Description	A synthetic peptide of human YWHAZ (NP_001129171.1).
Other Names	YWHAZ;14-3-3-zeta;HEL-S-3;HEL-S-93;HEL4;KCIP-1;YWHAD
Accession No.	Uniprot:P63104GenelD:7534
Calculated MW	28kDa
SDS-PAGE MW	28kDa
Formulation	PBS with 0.02% sodium azide,50% glycerol,pH7.3.
Storage	Store at -20°C. Avoid freeze / thaw cycles.

## Application Details

WB 1:500 - 1:2000

## Images



Western blot analysis of extracts of various cell lines, using YWHAZ Antibody.

## Background

This gene product belongs to the 14-3-3 family of proteins which mediate signal transduction by binding to phosphoserine-containing proteins. This highly conserved protein family is found in both plants and mammals, and this protein is 99% identical to the mouse, rat and sheep orthologs. The encoded protein interacts with IRS1 protein, suggesting a role in regulating insulin sensitivity. Several transcript variants that differ in the 5' UTR but that encode the same protein have been identified for this gene.

---

Note: This product is for in vitro research use only and is not intended for use in humans or animals.