

HBG1 Polyclonal Antibody

Catalog No: #28795



Package Size: #28795-1 50ul #28795-2 100ul

Orders: order@signalwayantibody.com
Support: tech@signalwayantibody.com

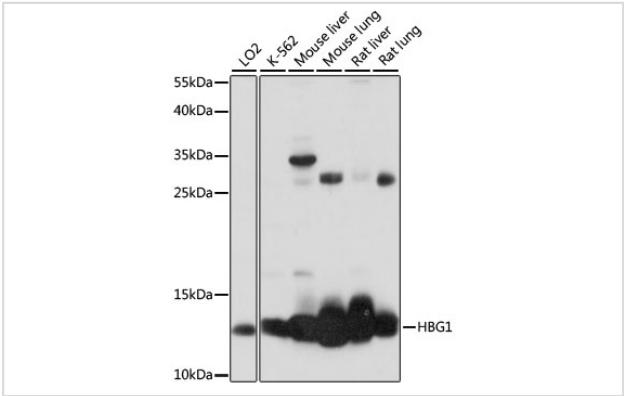
Description

Product Name	HBG1 Polyclonal Antibody
Host Species	Rabbit
Clonality	Polyclonal
Isotype	IgG
Purification	Affinity purification
Applications	WB,IHC
Species Reactivity	Hu,Ms,Rt
Immunogen Description	A synthetic peptide of human HBG1 (NP_000550.2).
Other Names	HBG1; HBG-T2; HBGA; HBGR; HSGGL1; PRO2979; hemoglobin subunit gamma-1
Accession No.	Swiss-Prot#:P69891NCBI Gene ID:3047
Calculated MW	12kDa
Formulation	Avoid freeze / thaw cycles. Buffer: PBS with 50% glycerol, pH7.4.
Storage	Store at -20°C

Application Details

WB 1:500 - 1:2000IHC 1:100 - 1:200

Images



Western blot analysis of extracts of various cell lines, using HBG1 antibody.

Background

The gamma globin genes (HBG1 and HBG2) are normally expressed in the fetal liver, spleen and bone marrow. Two gamma chains together with two alpha chains constitute fetal hemoglobin (HbF) which is normally replaced by adult hemoglobin (HbA) at birth. In some beta-thalassemias and related conditions, gamma chain production continues into adulthood. The two types of gamma chains differ at residue 136 where glycine is found in the G-gamma product (HBG2) and alanine is found in the A-gamma product (HBG1). The former is predominant at birth. The order of the genes in the beta-globin cluster is: 5'-epsilon -- gamma-G -- gamma-A -- delta -- beta--3'.

Note: This product is for in vitro research use only and is not intended for use in humans or animals.