

OPN3 Polyclonal Antibody

Catalog No: #29425

Package Size: #29425-1 50ul #29425-2 100ul

Orders: order@signalwayantibody.comSupport: tech@signalwayantibody.com

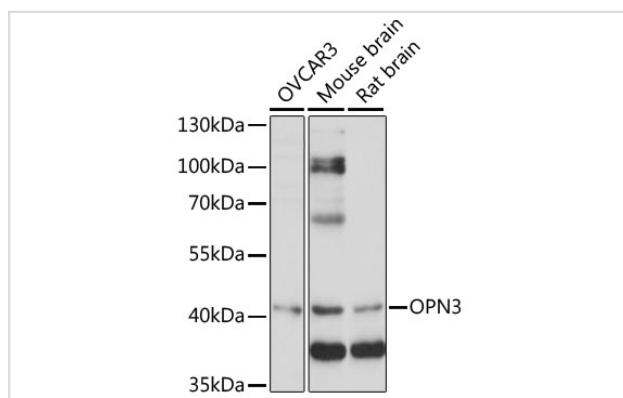
Description

| | |
|-----------------------|---|
| Product Name | OPN3 Polyclonal Antibody |
| Host Species | Rabbit |
| Clonality | Polyclonal |
| Isotype | IgG |
| Purification | Affinity purification |
| Applications | WB |
| Species Reactivity | Hu,Ms,Rt |
| Immunogen Description | A synthetic peptide of human OPN3 (NP_055137.2). |
| Other Names | OPN3; ECPN; PPP1R116; opsin-3 |
| Accession No. | Swiss-Prot#:Q9H1Y3NCBI Gene ID:23596 |
| Calculated MW | 42kDa |
| Formulation | Avoid freeze / thaw cycles. Buffer: PBS with 50% glycerol, pH7.4. |
| Storage | Store at -20°C |

Application Details

WB □ 1:500 - 1:2000

Images



Western blot analysis of extracts of various cell lines, using OPN3 antibody.

Background

Opsins are members of the guanine nucleotide-binding protein (G protein)-coupled receptor superfamily. In addition to the visual opsins, mammals possess several photoreceptive non-visual opsins that are expressed in extraocular tissues. This gene, opsin 3, is strongly expressed in brain and testis and weakly expressed in liver, placenta, heart, lung, skeletal muscle, kidney, and pancreas. The gene may also be expressed in the retina. The protein has the canonical features of a photoreceptive opsin protein.

Note: This product is for in vitro research use only and is not intended for use in humans or animals.