

OPN5 Polyclonal Antibody

Catalog No: #29520



Package Size: #29520-1 50ul #29520-2 100ul

Orders: order@signalwayantibody.com
Support: tech@signalwayantibody.com

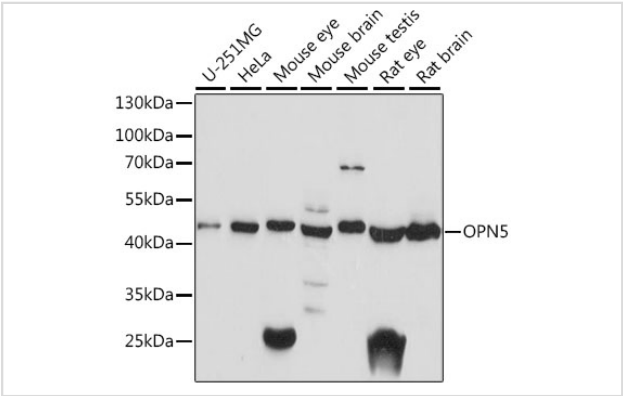
Description

Product Name	OPN5 Polyclonal Antibody
Host Species	Rabbit
Clonality	Polyclonal
Isotype	IgG
Purification	Affinity purification
Applications	WB
Species Reactivity	Hu,Ms,Rt
Immunogen Description	A synthetic peptide of human OPN5 (NP_859528.1).
Other Names	OPN5; GPR136; GRP136; PGR12; TMEM13; opsin-5
Accession No.	Swiss-Prot#:Q6U736NCBI Gene ID:221391
Calculated MW	42kDa
Formulation	Avoid freeze / thaw cycles. Buffer: PBS with 50% glycerol, pH7.4.
Storage	Store at -20°C

Application Details

WB 1:500 - 1:2000

Images



Western blot analysis of extracts of various cell lines, using OPN5 antibody.

Background

Opsins are members of the guanine nucleotide-binding protein (G protein)-coupled receptor superfamily. This opsin gene is expressed in the eye, brain, testes, and spinal cord. This gene belongs to the seven-exon subfamily of mammalian opsin genes that includes peropsin (RRH) and retinal G protein coupled receptor (RGR). Like these other seven-exon opsin genes, this family member may encode a protein with photoisomerase activity. Alternative splicing results in multiple transcript variants.

Note: This product is for in vitro research use only and is not intended for use in humans or animals.