

KMT5C Polyclonal Antibody

Catalog No: #29787



Package Size: #29787-1 50ul #29787-2 100ul

Orders: order@signalwayantibody.com
Support: tech@signalwayantibody.com

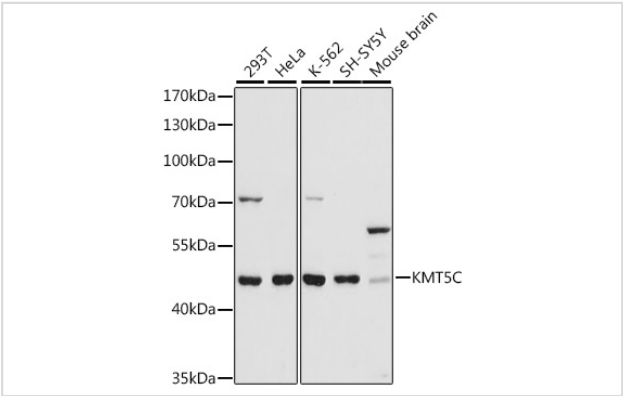
Description

Product Name	KMT5C Polyclonal Antibody
Host Species	Rabbit
Clonality	Polyclonal
Isotype	IgG
Purification	Affinity purification
Applications	WB
Species Reactivity	Human,Mouse
Immunogen Description	A synthetic peptide of human KMT5C (NP_116090.2).
Other Names	KMT5C; SUV420H2; Suv4-20h2; lysine methyltransferase 5C
Accession No.	Swiss-Prot#:Q86Y97NCBI Gene ID:84787
Calculated MW	52kDa
Formulation	Avoid freeze / thaw cycles. Buffer: PBS with 50% glycerol, pH7.4.
Storage	Store at -20°C

Application Details

WB 1:500 - 1:2000

Images



Western blot analysis of extracts of various cell lines, using KMT5C antibody at 1:1000 dilution.

Background

SUV420H2 and the related enzyme SUV420H1 (MIM 610881) function as histone methyltransferases that specifically trimethylate nucleosomal histone H4 (see MIM 602822) on lysine-20 (K20).

Note: This product is for in vitro research use only and is not intended for use in humans or animals.