

OCM2 Polyclonal Antibody

Catalog No: #29833

Package Size: #29833-1 50ul #29833-2 100ul

Orders: order@signalwayantibody.comSupport: tech@signalwayantibody.com

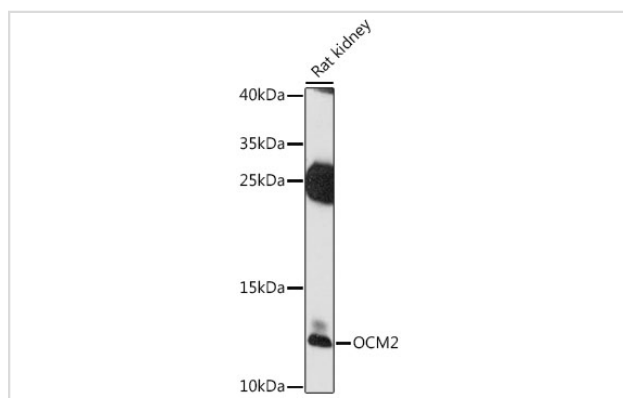
Description

Product Name	OCM2 Polyclonal Antibody
Host Species	Rabbit
Clonality	Polyclonal
Isotype	IgG
Purification	Affinity purification
Applications	WB
Species Reactivity	Rt
Immunogen Description	Recombinant fusion protein of human OCM2 (NP_006179.2).
Other Names	OCM2; OCM; oncomodulin 2
Accession No.	Swiss-Prot#:P0CE71NCBI Gene ID:4951
Calculated MW	12kDa
Formulation	Avoid freeze / thaw cycles. Buffer: PBS with 50% glycerol, pH7.4.
Storage	Store at -20°C

Application Details

WB □ 1:500 - 1:2000

Images



Western blot analysis of extracts of rat kidney, using OCM2 antibody.

Background

This gene is similar to the oncomodulin gene, a high-affinity calcium ion-binding protein that belongs to the superfamily of calmodulin proteins, also known as the EF-hand proteins.

Note: This product is for in vitro research use only and is not intended for use in humans or animals.