

PKM2 (Phospho-Tyr105) Antibody

Catalog No: #12821

Package Size: #12821-1 50ul #12821-2 100ul

Orders: order@signalwayantibody.com
Support: tech@signalwayantibody.com

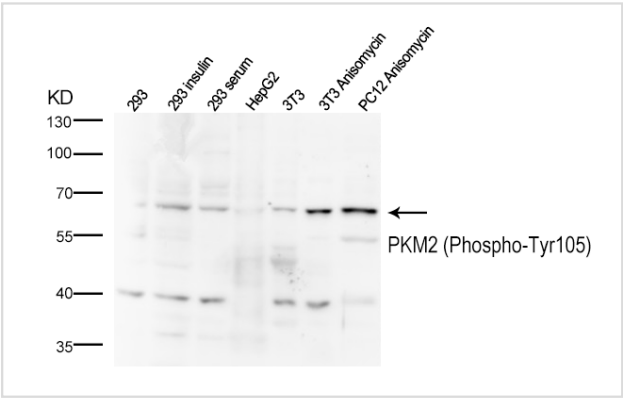
Description

Product Name	PKM2 (Phospho-Tyr105) Antibody
Host Species	Rabbit
Clonality	Polyclonal
Purification	Affinity purification using immunogen.
Applications	WB
Species Reactivity	Hu Ms Rt
Specificity	Phospho-PKM2 (Tyr105) Antibody detects endogenous levels of PKM2 only when phosphorylated at Tyr105
Immunogen Type	Peptide
Immunogen Description	Synthesized peptide derived from human PKM2 around the phosphorylation site of Tyr105.
Target Name	PKM2 (Phospho-Tyr105)
Modification	Phospho
Other Names	PKM, p58, PK3, PKM2, Pyruvate Kinase, Pyruvate kinase 2/3, Pyruvate kinase, m1, Pyruvate kinase, muscle, TCB, Tumor M2-PK, OIP-3, OIP3, Opa-interacting protein 3, CTHBP, PK, muscle type, PK2, Pyruvate kinase isozymes M1/M2, Pyruvate kinase muscle iso ...
Accession No.	Swiss-Prot#: P14618NCBI Gene ID: 5315
Target Species	human
Calculated MW	58 kDa
Concentration	1.0mg/mL
Formulation	Rabbit IgG in phosphate buffered saline , pH 7.4, 150mM NaCl, 0.02% sodium azide and 50% glycerol.
Storage	Store at -20°C

Application Details

Western blotting: 1:1000-3000

Images



Western blot analysis of extracts of various cell lines, using PKM2 (Phospho-Tyr105)

Published Papers

et al., Rab25 acts as an oncogene and participates in the regulation of aerobic glycolysis via PKM2 in gastric adenocarcinoma. In Transl Cancer Res on 2021 Feb by Tianyu Zheng,

Linyi Huang, et al.. PMID:35116410, , (2021)

[PMID:35116410](#)

Note: This product is for in vitro research use only and is not intended for use in humans or animals.