

CD28 (Phospho-Tyr218) Antibody

Catalog No: #12823

Package Size: #12823-1 50ul #12823-2 100ul

Orders: order@signalwayantibody.comSupport: tech@signalwayantibody.com

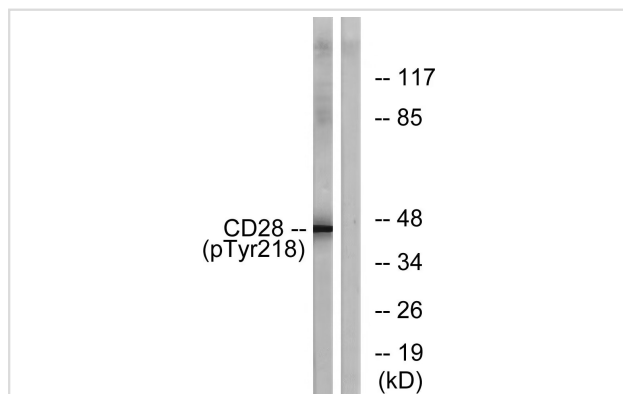
Description

Product Name	CD28 (Phospho-Tyr218) Antibody
Host Species	Rabbit
Clonality	Polyclonal
Purification	Affinity purification using immunogen.
Applications	WB
Species Reactivity	Hu Ms
Specificity	CD28 (Phospho-Tyr218) Antibody detects endogenous levels of CD28 only when phosphorylated at Tyr218
Immunogen Type	Peptide
Immunogen Description	Synthesized peptide derived from human CD28 around the phosphorylation site of Tyr218.
Target Name	CD28 (Phospho-Tyr218)
Modification	Phospho
Other Names	CD28, CD28 antigen, CD28 antigen (Tp44), Tp44, CD28 molecule
Accession No.	Swiss-Prot#: P10747NCBI Gene ID: 940
Target Species	human
Calculated MW	25 kDa
Concentration	1.0mg/mL
Formulation	Liquid in PBS containing 50% glycerol, 0.5% BSA and 0.02% sodium azide.
Storage	Store at -20°C

Application Details

Western blotting: 1:500-2000

Images



Western blot analysis of lysates from HepG2 cells treated with nocodazole 1ug/ml 16h, using CD28 (Phospho-Tyr218) Antibody. The lane on the right is blocked with the phospho peptide.

Note: This product is for in vitro research use only and is not intended for use in humans or animals.