

ETBR Polyclonal Antibody

Catalog No: #46737

Package Size: #46737-1 50ul #46737-2 100ul

Orders: order@signalwayantibody.comSupport: tech@signalwayantibody.com

Description

Product Name	ETBR Polyclonal Antibody
Host Species	Rabbit
Clonality	Polyclonal
Purification	The antibody was affinity-purified from rabbit antiserum by affinity-chromatography using epitope-specific immunogen.
Applications	WB;IHC;IF;ELISA
Species Reactivity	Human;Rat;Mouse
Specificity	ETBR Polyclonal Antibody detects endogenous levels of ETBR
Immunogen Description	Synthesized peptide derived from ETBR at AA range: 31-80
Target Name	ETBR
Other Names	Endothelin B receptor (ET-B) (ET-BR) (Endothelin receptor non-selective type)
Accession No.	Swiss-Prot:P24530NCBI Gene ID:1910
Calculated MW	50 kDa
Concentration	1 mg/ml
Formulation	Liquid in PBS containing 50% glycerol, 0.5% BSA and 0.02% sodium azide.
Storage	Store at -20°C

Application Details

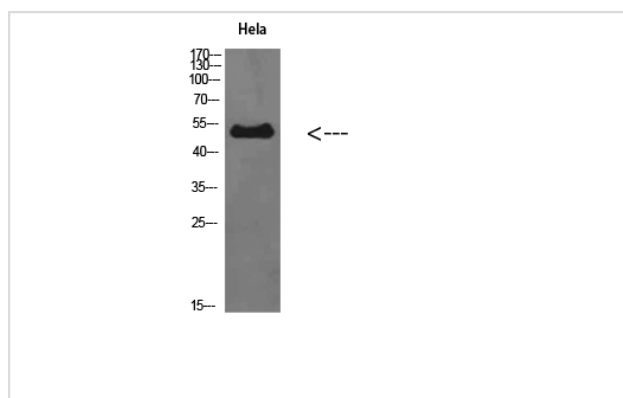
IHC-p: 100-300.

WB 1:500-2000,

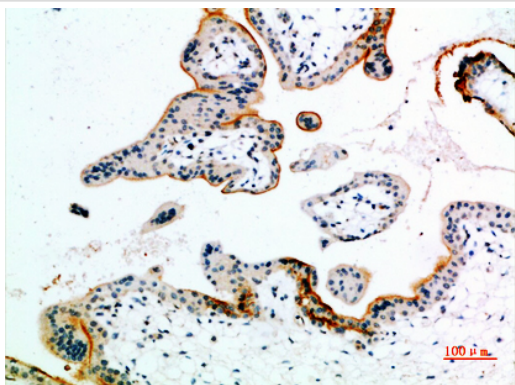
ELISA 1:10000-20000.

IF 1:50-200

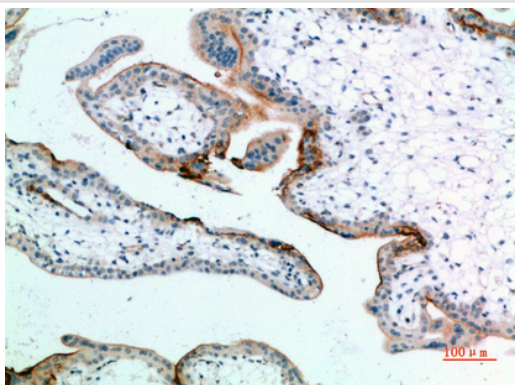
Images



Western Blot analysis of HeLa cells using ETBR Polyclonal Antibody diluted at 1:500. Secondary antibody was diluted at 1:20000



Immunohistochemical analysis of paraffin-embedded human-placenta, antibody was diluted at 1:200



Immunohistochemical analysis of paraffin-embedded human-placenta, antibody was diluted at 1:200

Note: This product is for in vitro research use only and is not intended for use in humans or animals.