

KCTD15 Polyclonal Antibody

Catalog No: #31487



Package Size: #31487-1 50ul #31487-2 100ul

Orders: order@signalwayantibody.com
Support: tech@signalwayantibody.com

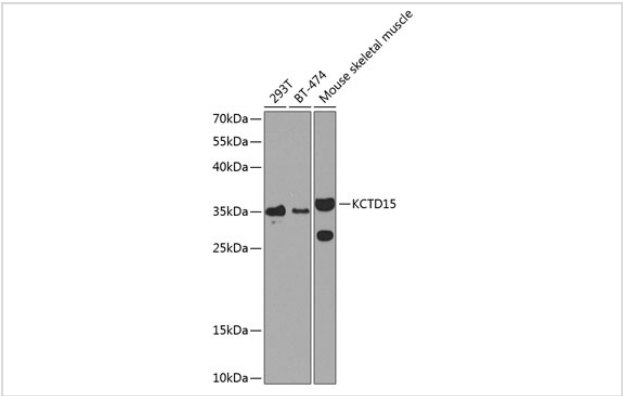
Description

Product Name	KCTD15 Polyclonal Antibody
Host Species	Rabbit
Clonality	Polyclonal
Isotype	IgG
Purification	Affinity purification
Applications	WB
Species Reactivity	Human,Mouse,Rat
Immunogen Description	Recombinant fusion protein of human KCTD15 (NP_076981.2).
Other Names	KCTD15
Accession No.	Uniprot:Q96SI1 GeneID:79047
Calculated MW	32kDa
SDS-PAGE MW	32kDa
Formulation	PBS with 0.02% sodium azide,50% glycerol,pH7.3.
Storage	Store at -20°C. Avoid freeze / thaw cycles.

Application Details

WB 1:500 - 1:2000

Images



Western blot analysis of extracts of various cell lines, using KCTD15 antibody.

Background

During embryonic development, interferes with neural crest formation (By similarity. Inhibits AP2 transcriptional activity by interaction with its activation domain.

Note: This product is for in vitro research use only and is not intended for use in humans or animals.