

KPNA3 Polyclonal Antibody

Catalog No: #31518



Package Size: #31518-1 50ul #31518-2 100ul

Orders: order@signalwayantibody.com
Support: tech@signalwayantibody.com

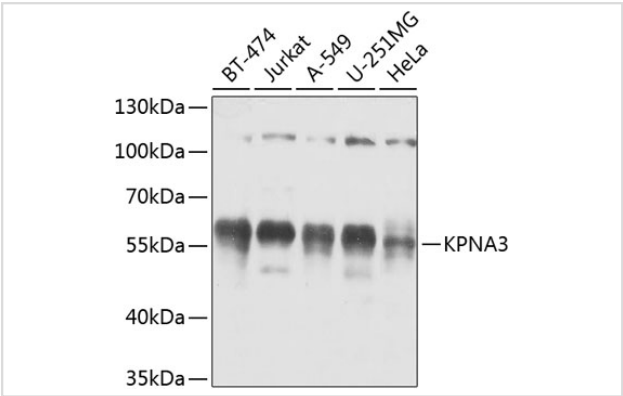
Description

Product Name	KPNA3 Polyclonal Antibody
Host Species	Rabbit
Clonality	Polyclonal
Isotype	IgG
Purification	Affinity purification
Applications	WB,IHC
Species Reactivity	Human,Mouse,Rat
Immunogen Description	Recombinant fusion protein of human KPNA3 (NP_002258.2).
Other Names	KPNA3;IPOA4;SRP1;SRP1gamma;SRP4;hSRP1
Accession No.	Uniprot:O00505GeneID:3839
Calculated MW	55kDa
SDS-PAGE MW	55kDa
Formulation	PBS with 0.02% sodium azide,50% glycerol,pH7.3.
Storage	Store at -20°C. Avoid freeze / thaw cycles.

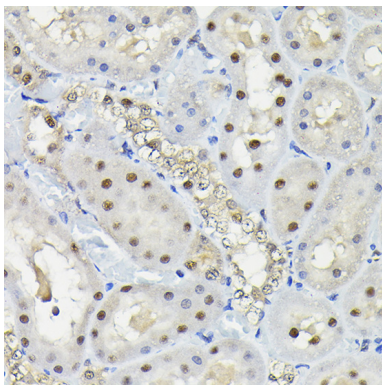
Application Details

WB 1:500 - 1:2000IHC 1:50 - 1:100

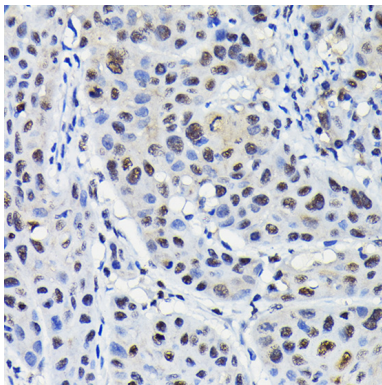
Images



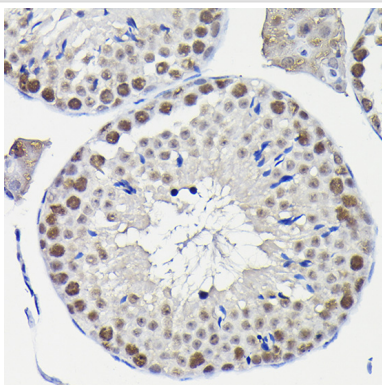
Western blot analysis of extracts of various cell lines, using KPNA3 antibody.



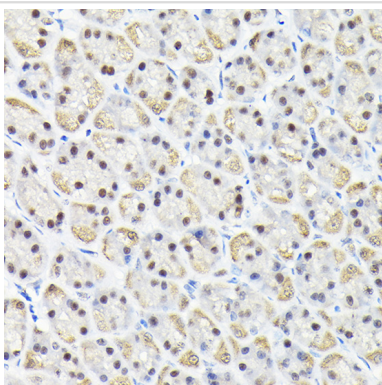
Immunohistochemistry of paraffin-embedded rat kidney using KPNA3 Rabbit pAb.



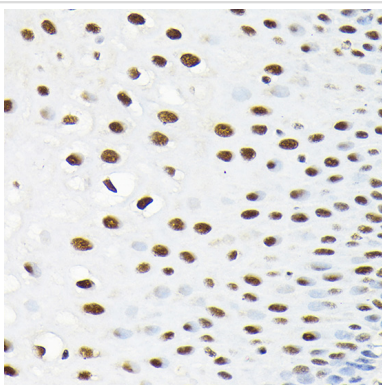
Immunohistochemistry of paraffin-embedded human esophageal cancer using KPNA3 Rabbit pAb.



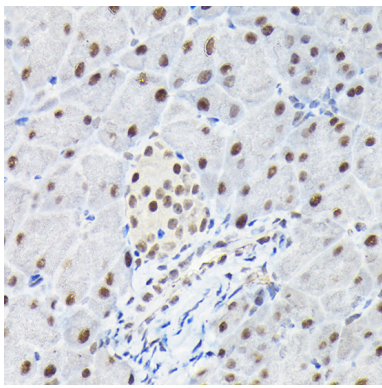
Immunohistochemistry of paraffin-embedded mouse testis using KPNA3 Rabbit pAb.



Immunohistochemistry of paraffin-embedded rat stomach using KPNA3 Rabbit pAb.



Immunohistochemistry of paraffin-embedded human esophageal using KPNA3 Rabbit pAb.



Immunohistochemistry of paraffin-embedded mouse pancreas using KPNA3 Rabbit pAb.

Background

The transport of molecules between the nucleus and the cytoplasm in eukaryotic cells is mediated by the nuclear pore complex (NPC), which consists of 60-100 proteins. Small molecules (up to 70 kD) can pass through the nuclear pore by nonselective diffusion while larger molecules are transported by an active process. The protein encoded by this gene belongs to the importin alpha family, and is involved in nuclear protein import.

Note: This product is for in vitro research use only and is not intended for use in humans or animals.