

YTHDF3 Polyclonal Antibody

Catalog No: #31538



Package Size: #31538-1 50ul #31538-2 100ul

Orders: order@signalwayantibody.com
Support: tech@signalwayantibody.com

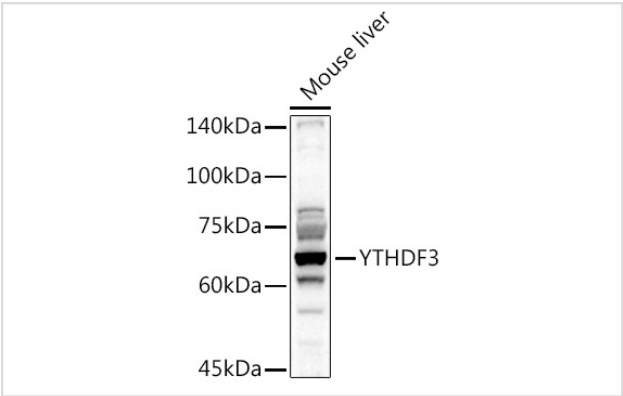
Description

Product Name	YTHDF3 Polyclonal Antibody
Host Species	Rabbit
Clonality	Polyclonal
Isotype	IgG
Purification	Affinity purification
Applications	WB,IHC
Species Reactivity	Human,Mouse,Rat
Immunogen Description	Recombinant fusion protein of human YTHDF3 (NP_689971.4).
Other Names	YTHDF3
Accession No.	Uniprot:Q7Z739GeneID:253943
Calculated MW	64kDa
SDS-PAGE MW	64KDa
Formulation	PBS with 0.02% sodium azide,50% glycerol,pH7.3.
Storage	Store at -20°C. Avoid freeze / thaw cycles.

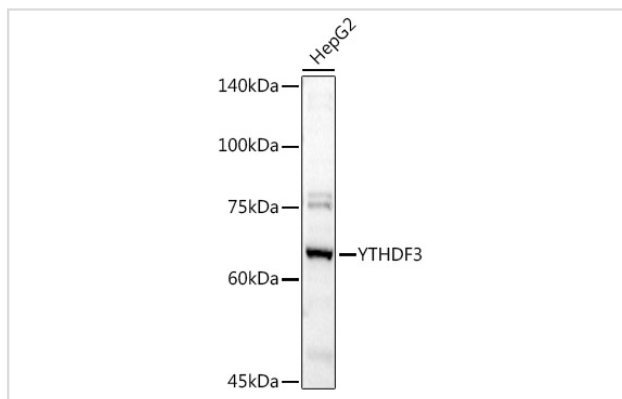
Application Details

WB 1:500 - 1:2000IHC 1:50 - 1:100

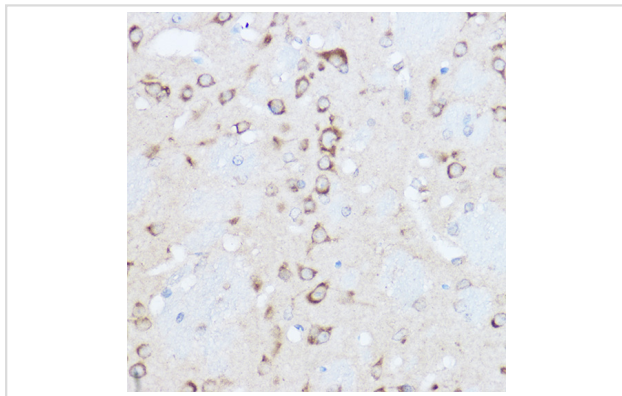
Images



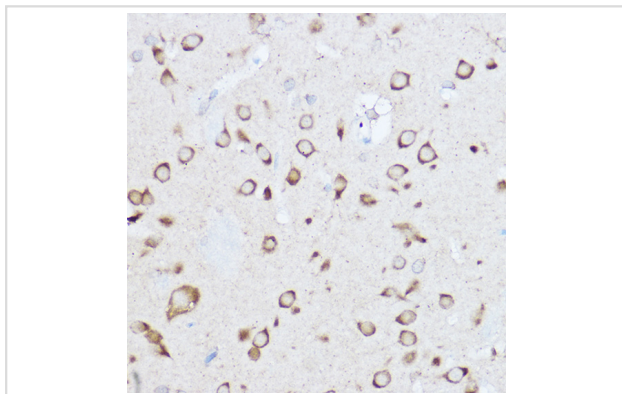
Western blot analysis of extracts of Mouse liver, using YTHDF3 antibody.



Western blot analysis of extracts of HepG2 cells, using YTHDF3 antibody.



Immunohistochemistry of paraffin-embedded mouse brain using YTHDF3 Rabbit pAb.



Immunohistochemistry of paraffin-embedded rat brain using YTHDF3 Rabbit pAb.

Background

This gene encodes a member of the YTH (YT521-B homology) domain protein family. The YTH domain is common in eukaryotes, is often found in the middle of the protein sequence, and may function in binding to RNA. Alternative splicing results in multiple transcript variants.

Note: This product is for in vitro research use only and is not intended for use in humans or animals.