

# YWHAH Polyclonal Antibody

Catalog No: #31666



Package Size: #31666-1 50ul #31666-2 100ul

Orders: [order@signalwayantibody.com](mailto:order@signalwayantibody.com)  
Support: [tech@signalwayantibody.com](mailto:tech@signalwayantibody.com)

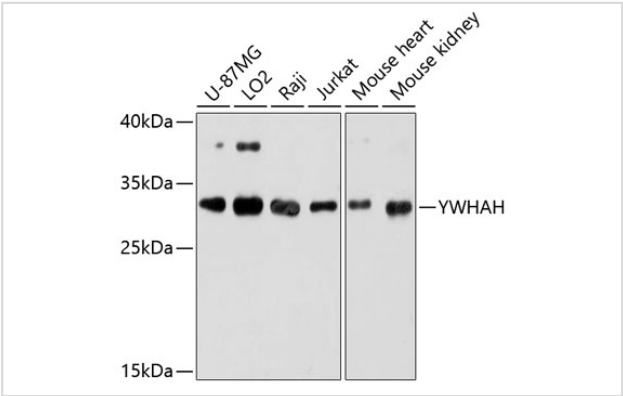
## Description

Product Name	YWHAH Polyclonal Antibody
Host Species	Rabbit
Clonality	Polyclonal
Isotype	IgG
Purification	Affinity purification
Applications	WB,IHC,IF
Species Reactivity	Hu,Ms,Rt
Immunogen Description	Recombinant fusion protein of human YWHAH (NP_003396.1).
Other Names	YWHAH; YWHA1; 14-3-3 protein eta
Accession No.	Swiss-Prot#:Q04917NCBI Gene ID:7533
Calculated MW	28kDa
Formulation	Avoid freeze / thaw cycles. Buffer: PBS with 50% glycerol, pH7.4.
Storage	Store at -20°C

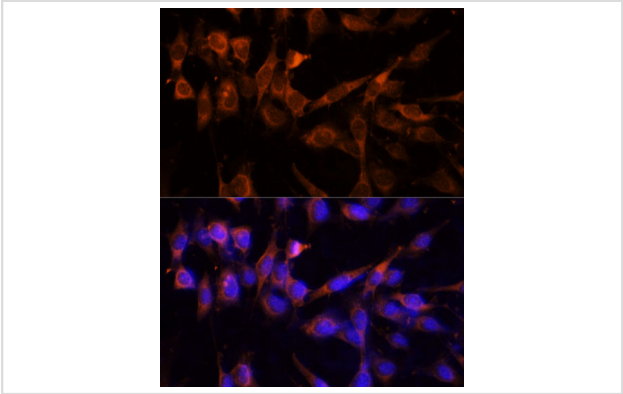
## Application Details

WB 1:500 - 1:2000IHC 1:50 - 1:100IF 1:50 - 1:100

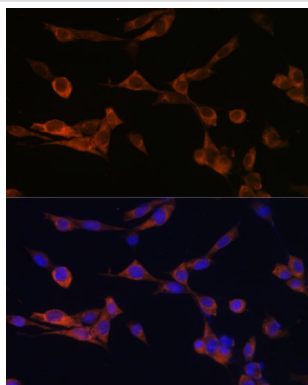
## Images



Western blot analysis of extracts of various cell lines, using YWHAH antibody.



Immunofluorescence analysis of NIH-3T3 cells using YWHAH Polyclonal Antibody.



Immunofluorescence analysis of NIH-3T3 cells using YWHAH Polyclonal Antibody.

## Background

This gene product belongs to the 14-3-3 family of proteins which mediate signal transduction by binding to phosphoserine-containing proteins. This highly conserved protein family is found in both plants and mammals, and this protein is 99% identical to the mouse, rat and bovine orthologs. This gene contains a 7 bp repeat sequence in its 5' UTR, and changes in the number of this repeat have been associated with early-onset schizophrenia and psychotic bipolar disorder.

Note: This product is for in vitro research use only and is not intended for use in humans or animals.