

ONECUT1 Polyclonal Antibody

Catalog No: #31729



Package Size: #31729-1 50ul #31729-2 100ul

Orders: order@signalwayantibody.com
Support: tech@signalwayantibody.com

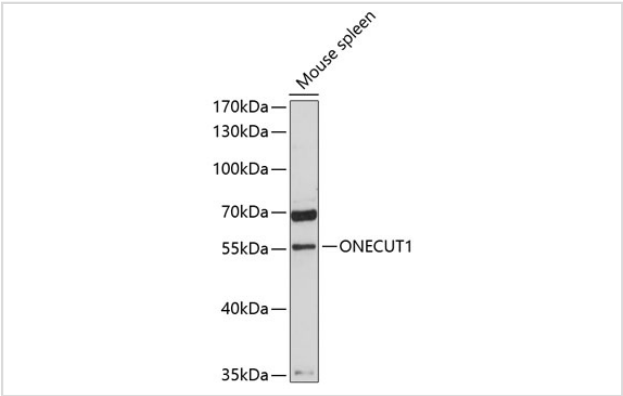
Description

Product Name	ONECUT1 Polyclonal Antibody
Host Species	Rabbit
Clonality	Polyclonal
Isotype	IgG
Purification	Affinity purification
Applications	WB
Species Reactivity	Hu,Ms
Immunogen Description	Recombinant fusion protein of human ONECUT1 (NP_004489.1).
Other Names	ONECUT1; HNF-6; HNF6; HNF6A; one cut homeobox 1
Accession No.	Swiss-Prot#:Q9UBC0NCBI Gene ID:3175
Calculated MW	55kDa
Formulation	Avoid freeze / thaw cycles. Buffer: PBS with 50% glycerol, pH7.4.
Storage	Store at -20°C

Application Details

WB 1:200 - 1:2000

Images



Western blot analysis of extracts of mouse spleen, using ONECUT1 antibody.

Background

This gene encodes a member of the Cut homeobox family of transcription factors. Expression of the encoded protein is enriched in the liver, where it stimulates transcription of liver-expressed genes, and antagonizes glucocorticoid-stimulated gene transcription. This gene may influence a variety of cellular processes including glucose metabolism, cell cycle regulation, and it may also be associated with cancer. Alternative splicing results in multiple transcript variants.

Note: This product is for in vitro research use only and is not intended for use in humans or animals.