

## CD272 Polyclonal Antibody

Catalog No: #46813

Package Size: #46813-1 50ul #46813-2 100ul

Orders: [order@signalwayantibody.com](mailto:order@signalwayantibody.com)Support: [tech@signalwayantibody.com](mailto:tech@signalwayantibody.com)

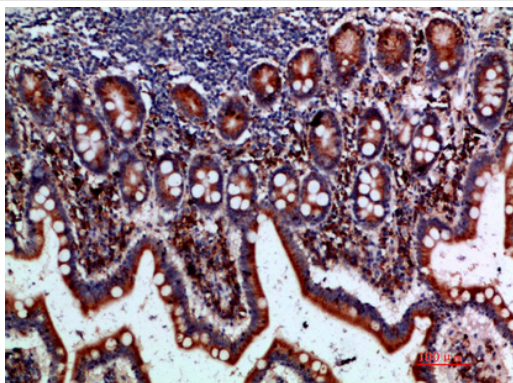
## Description

Product Name	CD272 Polyclonal Antibody
Host Species	Rabbit
Clonality	Polyclonal
Purification	The antibody was affinity-purified from rabbit serum by affinity-chromatography using specific immunogen.
Applications	IHC
Species Reactivity	Hu
Specificity	The antibody detects endogenous CD272
Immunogen Type	protein
Immunogen Description	Synthetic peptide from human protein at AA range: 101-150
Target Name	CD272
Other Names	B- and T-lymphocyte attenuator (B- and T-lymphocyte-associated protein) (CD antigen CD272)
Accession No.	Swiss-Prot:Q7Z6A9NCBI Gene ID:151888
Concentration	1 mg/ml
Formulation	Liquid in PBS containing 50% glycerol, 0.5% BSA and 0.02% sodium azide.
Storage	Store at -20°C

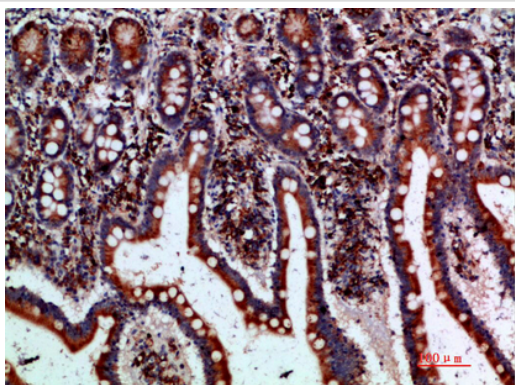
## Application Details

Immunohistochemistry: IHC 1:50-300

## Images



Immunohistochemical analysis of paraffin-embedded human-small-intestine, antibody was diluted at 1:200



Immunohistochemical analysis of paraffin-embedded human-small-intestine, antibody was diluted at 1:200

---

Note: This product is for in vitro research use only and is not intended for use in humans or animals.