

## CD152 Polyclonal Antibody

Catalog No: #46815



Package Size: #46815-1 50ul #46815-2 100ul

Orders: [order@signalwayantibody.com](mailto:order@signalwayantibody.com)Support: [tech@signalwayantibody.com](mailto:tech@signalwayantibody.com)

## Description

Product Name	CD152 Polyclonal Antibody
Host Species	Rabbit
Clonality	Polyclonal
Purification	The antibody was affinity-purified from rabbit serum by affinity-chromatography using specific immunogen.
Applications	IHC,IF,ELISA
Species Reactivity	Human,Mouse,Rat
Specificity	The antibody detects endogenous CD152
Immunogen Description	Synthetic peptide from human protein at AA range: 41-90
Target Name	CD152
Other Names	Cytotoxic T-lymphocyte protein 4 (Cytotoxic T-lymphocyte-associated antigen 4) (CTLA-4) (CD antigen CD152)
Accession No.	Swiss-Prot:P16410NCBI Gene ID:1493
Concentration	1 mg/ml
Formulation	Liquid in PBS containing 50% glycerol, 0.5% BSA and 0.02% sodium azide.
Storage	Store at -20°C

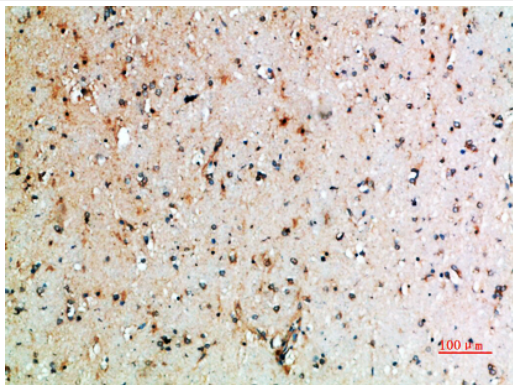
## Application Details

Immunohistochemistry: IHC 1:50-300

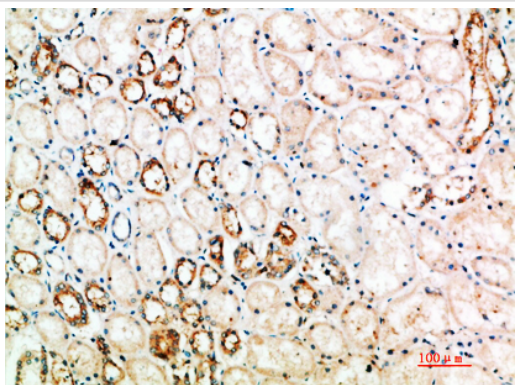
IF 1:50-200

ELISA 1:10000-20000

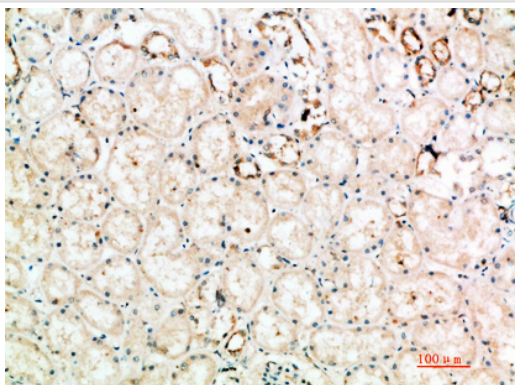
## Images



Immunohistochemical analysis of paraffin-embedded human-brain, antibody was diluted at 1:200



Immunohistochemical analysis of paraffin-embedded human-kidney, antibody was diluted at 1:200



Immunohistochemical analysis of paraffin-embedded human-kidney, antibody was diluted at 1:200

---

Note: This product is for in vitro research use only and is not intended for use in humans or animals.