

## GM-CSF Polyclonal Antibody

Catalog No: #46884

Package Size: #46884-1 50ul #46884-2 100ul

Orders: [order@signalwayantibody.com](mailto:order@signalwayantibody.com)Support: [tech@signalwayantibody.com](mailto:tech@signalwayantibody.com)

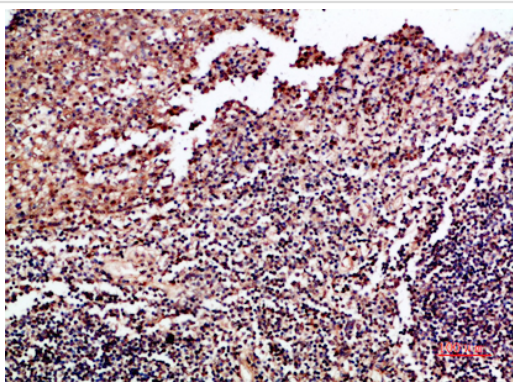
## Description

Product Name	GM-CSF Polyclonal Antibody
Host Species	Rabbit
Clonality	Polyclonal
Purification	The antibody was affinity-purified from rabbit serum by affinity-chromatography using specific immunogen.
Applications	IHC
Species Reactivity	Hu
Specificity	The antibody detects endogenous GM-CSF
Immunogen Type	protein
Immunogen Description	Synthetic peptide from human protein at AA range: 100-144
Target Name	GM-CSF
Other Names	Granulocyte-macrophage colony-stimulating factor (GM-CSF) (Colony-stimulating factor) (CSF) (Molgramostin) (Sargramostim)
Accession No.	Swiss-Prot:P04141NCBI Gene ID:1437
Concentration	1 mg/ml
Formulation	Liquid in PBS containing 50% glycerol, 0.5% BSA and 0.02% sodium azide.
Storage	Store at -20°C

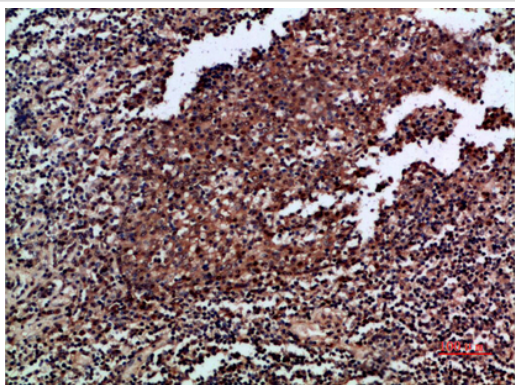
## Application Details

Immunohistochemistry: IHC 1:50-300

## Images



Immunohistochemical analysis of paraffin-embedded human-tonsil, antibody was diluted at 1:200



Immunohistochemical analysis of paraffin-embedded human-tonsil, antibody was diluted at 1:200

---

Note: This product is for in vitro research use only and is not intended for use in humans or animals.