

## CTXL Polyclonal Antibody

Catalog No: #46887

Package Size: #46887-1 50ul #46887-2 100ul

Orders: [order@signalwayantibody.com](mailto:order@signalwayantibody.com)Support: [tech@signalwayantibody.com](mailto:tech@signalwayantibody.com)

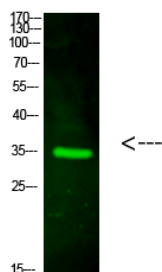
## Description

Product Name	CTXL Polyclonal Antibody
Host Species	Rabbit
Clonality	Polyclonal
Purification	The antibody was affinity-purified from rabbit antiserum by affinity-chromatography using epitope-specific immunogen.
Applications	WB
Species Reactivity	Hu
Specificity	This antibody detects endogenous levels of CTXL
Immunogen Type	protein
Immunogen Description	Synthesized peptide derived from human CTXL. at AA range: 260-290
Target Name	CTXL
Other Names	V-set and immunoglobulin domain-containing protein 2 (Cortical thymocyte-like protein) (CT-like protein)
Accession No.	Swiss-Prot:Q96IQ7NCBI Gene ID:23584
Calculated MW	34 kDa
Concentration	1 mg/ml
Formulation	Liquid in PBS containing 50% glycerol, 0.5% BSA and 0.02% sodium azide.
Storage	Store at -20°C

## Application Details

Western blotting: 1B£B'1500-1B£B'12000

## Images



Western Blot analysis of hela cells using primary antibody diluted at 1:1000(°C overnight). Secondary antibodyB£B'Goat Anti-rabbit IgG IRDye 800( diluted at 1:5000, 25B'£C, 1 hour)

Note: This product is for in vitro research use only and is not intended for use in humans or animals.