

KCTD17 antibody

Catalog No: #31844

Package Size: #31844-1 50ul #31844-2 100ul

Orders: order@signalwayantibody.comSupport: tech@signalwayantibody.com

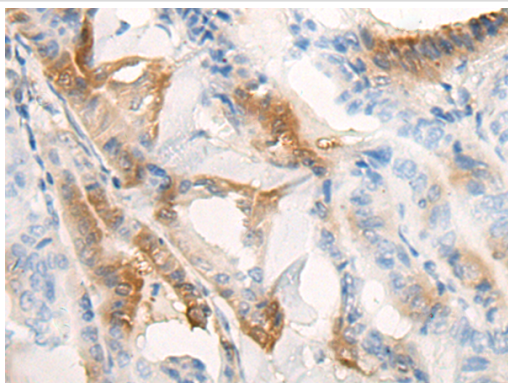
Description

Product Name	KCTD17 antibody
Host Species	Rabbit
Clonality	Polyclonal
Purification	Antigen affinity purification
Applications	IHC
Species Reactivity	Hu
Immunogen Description	Fusion protein of human KCTD17
Target Name	KCTD17
Accession No.	Swiss-Prot#: Q6PJW8NCBI Protein#: BC031038
Concentration	0.8mg/ml
Formulation	pH7.4 PBS, 0.05% NaN ₃ , 40% Glycerol
Storage	Store at -20°C/1 year

Application Details

IHC dilution:1:10-1:50

Images



The image is immunohistochemistry of paraffin-embedded Human thyroid cancer tissue using (KCT17 antibody) at dilution 1/25.

Background

This gene encodes a protein that belongs to a conserved family of potassium channel tetramerization domain (KCTD)-containing proteins. The encoded protein functions in ciliogenesis by acting as a substrate adaptor for the cullin3-based ubiquitin-conjugating enzyme E3 ligase, and targets trichoplein, a keratin-binding protein, for degradation via polyubiquitinylation. A mutation in this gene is associated with autosomal dominant myoclonic dystonia 26.?

Note: This product is for in vitro research use only and is not intended for use in humans or animals.