

KIN antibody

Catalog No: #31917



Package Size: #31917-1 50ul #31917-2 100ul

Orders: order@signalwayantibody.com
Support: tech@signalwayantibody.com

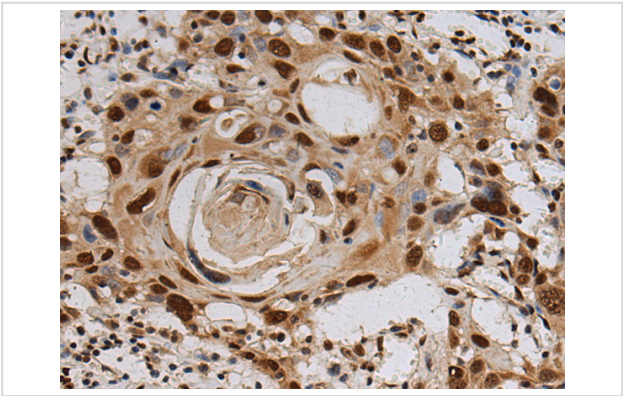
Description

Product Name	KIN antibody
Host Species	Rabbit
Clonality	Polyclonal
Purification	Antigen affinity purification
Applications	IHC
Species Reactivity	Hu, Ms
Immunogen Description	Fusion protein of human KIN
Target Name	KIN
Other Names	BTCD; Rts2; KIN17
Accession No.	Swiss-Prot#: Q9NZI5 NCBI Protein#: BC017309
Concentration	0.8mg/ml
Formulation	pH7.4 PBS, 0.05% NaN3, 40% Glycerol
Storage	Store at -20°C/1 year

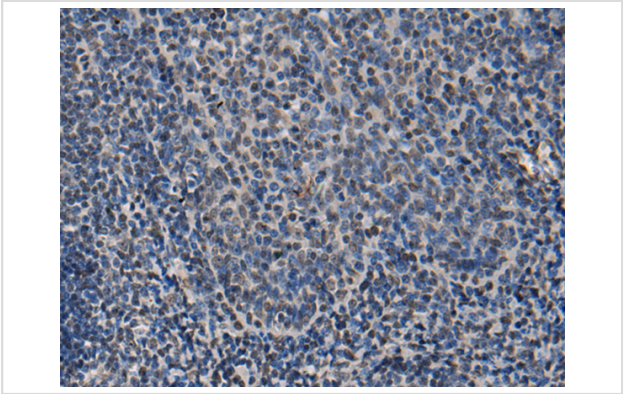
Application Details

IHC dilution:1:100-1:300

Images



The image is immunohistochemistry of paraffin-embedded Human esophagus cancer tissue using (KIN Antibody) at dilution 1/100.



The image is immunohistochemistry of paraffin-embedded Human tonsil tissue using (KIN Antibody) at dilution 1/100.

Background

The protein encoded by this gene is a nuclear protein that forms intranuclear foci during proliferation and is redistributed in the nucleoplasm during the cell cycle. Short-wave ultraviolet light provokes the relocalization of the protein, suggesting its participation in the cellular response to DNA damage. Originally selected based on protein-binding with RecA antibodies, the mouse protein presents a limited similarity with a functional domain of the bacterial RecA protein, a characteristic shared by this human ortholog. Alternative splicing of this gene results in multiple transcript variants. [provided by RefSeq, Jan 2012]

Note: This product is for in vitro research use only and is not intended for use in humans or animals.