

KATNA1 antibody

Catalog No: #31927

Package Size: #31927-1 50ul #31927-2 100ul

Orders: order@signalwayantibody.comSupport: tech@signalwayantibody.com

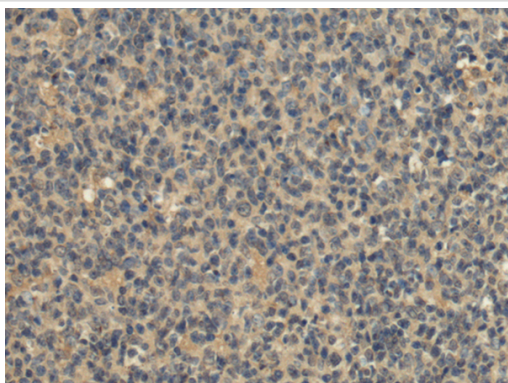
Description

Product Name	KATNA1 antibody
Host Species	Rabbit
Clonality	Polyclonal
Purification	Antigen affinity purification
Applications	IHC
Species Reactivity	Hu, Ms, Rt
Immunogen Description	Fusion protein of human KATNA1
Target Name	KATNA1
Accession No.	Swiss-Prot#: Q6UWX4NCBI Protein#: BC050428
Concentration	1.2mg/ml
Formulation	pH7.4 PBS, 0.05% NaN ₃ , 40% Glycerol
Storage	Store at -20°C/1 year

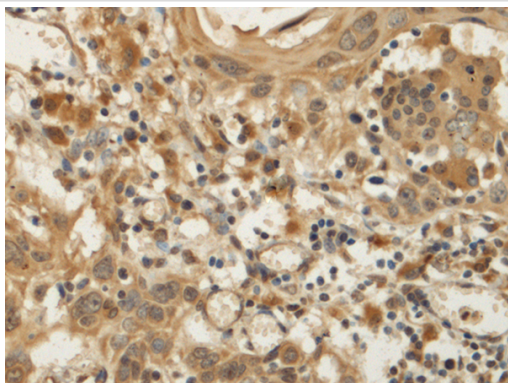
Application Details

IHC dilution:1:200-1:400

Images



The image is immunohistochemistry of paraffin-embedded Human tonsil tissue using (KATNA1 Antibody) at dilution 1/170.



The image is immunohistochemistry of paraffin-embedded Human esophagus cancer tissue using (KATNA1 Antibody) at dilution 1/170.

Background

Microtubules, polymers of alpha and beta tubulin subunits, form the mitotic spindle of a dividing cell and help to organize membranous organelles during interphase. Katanin is a heterodimer that consists of a 60 kDa ATPase (p60 subunit A 1) and an 80 kDa accessory protein (p80 subunit B 1). The p60 subunit acts to sever and disassemble microtubules, while the p80 subunit targets the enzyme to the centrosome. This gene encodes the p80 subunit. This protein is a member of the AAA family of ATPases. Multiple alternatively spliced variants, encoding the same protein, have been identified. [provided by RefSeq, Feb 2011]

Note: This product is for in vitro research use only and is not intended for use in humans or animals.