

KBTBD8 antibody

Catalog No: #43486



Package Size: #43486-1 50ul #43486-2 100ul

Orders: order@signalwayantibody.comSupport: tech@signalwayantibody.com

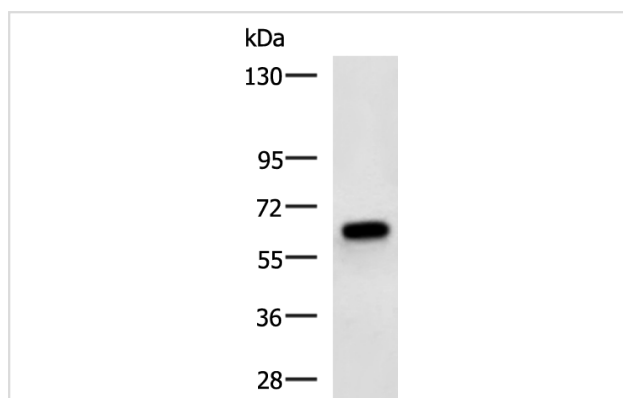
Description

Product Name	KBTBD8 antibody
Host Species	Rabbit
Clonality	Polyclonal
Purification	Antigen affinity purification
Applications	WB, IHC
Species Reactivity	Hu, Ms, Rt
Immunogen Description	Fusion protein of human KBTBD8
Target Name	KBTBD8
Other Names	TAKRP; TA-KRP
Accession No.	Swiss-Prot#: Q86T82 NCBI Protein#: BC117487
Calculated MW	69 kDa
Concentration	1.3mg/ml
Formulation	pH7.4 PBS, 0.05% NaN ₃ , 40% Glycerol
Storage	Store at -20°C/1 year

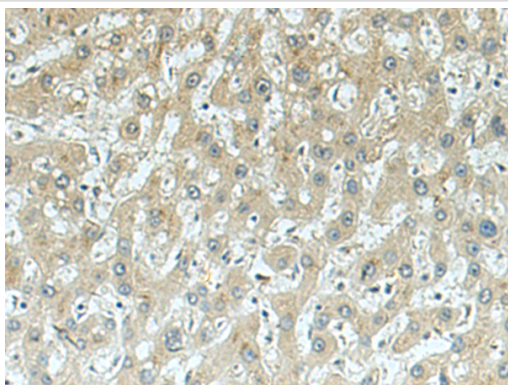
Application Details

WB dilution:1:1000-1:5000IHC dilution:1:50-1:300

Images



Gel: 6%SDS-PAGE, Lysate: 40 µg, Lane: NIH/3T3 cell lysate,
Primary antibody:KBTBD8 Antibody at dilution 1/1000,
Secondary antibody: Goat anti rabbit IgG at 1/5000 dilution,
Exposure time: 5 seconds



The image is immunohistochemistry of paraffin-embedded Human liver cancer tissue using (KBTBbody) at dilution 1/160.

Background

Substrate-specific adapter of a BCR (BTB-CUL3-RBX1) E3 ubiquitin ligase complex that acts as a regulator of neural crest specification. The BCR(KBTBD8) complex acts by mediating monoubiquitination of NOLC1 and TCOF1: monoubiquitination promotes the formation of a NOLC1-TCOF1 complex that acts as a platform to connect RNA polymerase I with enzymes responsible for ribosomal processing and modification, leading to remodel the translational program of differentiating cells in favor of neural crest specification.

Note: This product is for in vitro research use only and is not intended for use in humans or animals.