

XRCC1 Rabbit Polyclonal Antibody

Catalog No: #53041

Package Size: #53041-1 50ul #53041-2 100ul

Orders: order@signalwayantibody.com
Support: tech@signalwayantibody.com

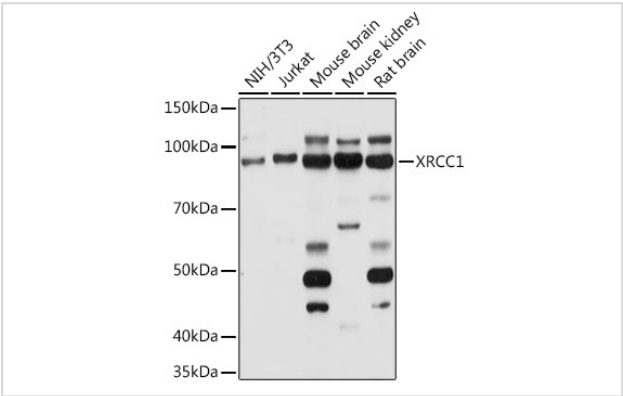
Description

Product Name	XRCC1 Rabbit Polyclonal Antibody
Host Species	Rabbit
Clonality	Polyclonal
Isotype	IgG
Purification	Affinity purification
Applications	WB,IHC,IF
Species Reactivity	Human,Mouse,Rat
Immunogen Description	Recombinant fusion protein of human XRCC1 (NP_006288.2).
Other Names	XRCC1;RCC
Accession No.	Uniprot:P18887GenelD:7515
Calculated MW	69kDa
SDS-PAGE MW	82kDa
Formulation	PBS with 0.02% sodium azide,50% glycerol,pH7.3.
Storage	Store at -20°C. Avoid freeze / thaw cycles.

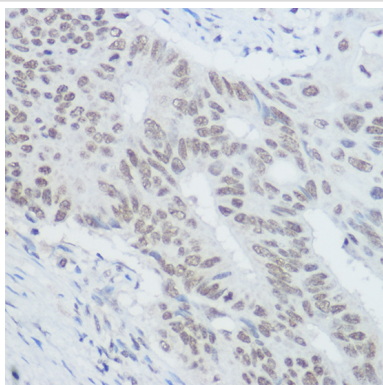
Application Details

WB 1:1000 - 1:2000IHC 1:50 - 1:200IF 1:50 - 1:200

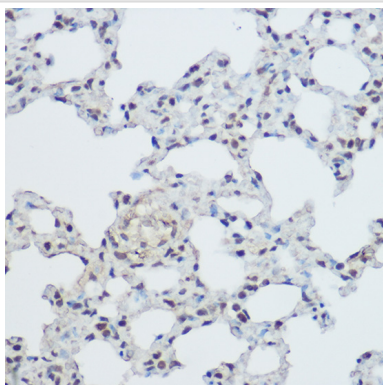
Images



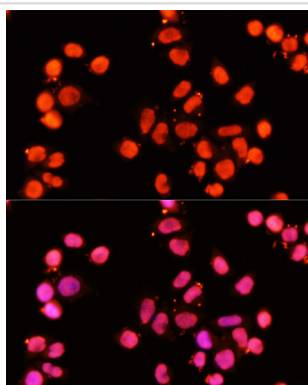
Western blot analysis of extracts of various cell lines, using XRCC1 antibody.



Immunohistochemistry of paraffin-embedded human colon carcinoma using XRCC1 Rabbit pAb.



Immunohistochemistry of paraffin-embedded mouse lung using XRCC1 Rabbit pAb.



Immunofluorescence analysis of HeLa cells using XRCC1 antibody.

Background

The protein encoded by this gene is involved in the efficient repair of DNA single-strand breaks formed by exposure to ionizing radiation and alkylating agents. This protein interacts with DNA ligase III, polymerase beta and poly (ADP-ribose) polymerase to participate in the base excision repair pathway. It may play a role in DNA processing during meiosis and recombination in germ cells. A rare microsatellite polymorphism in this gene is associated with cancer in patients of varying radiosensitivity.

Note: This product is for in vitro research use only and is not intended for use in humans or animals.