

# YES1 Rabbit Polyclonal Antibody

Catalog No: #53056



Package Size: #53056-1 50ul #53056-2 100ul

Orders: [order@signalwayantibody.com](mailto:order@signalwayantibody.com)  
Support: [tech@signalwayantibody.com](mailto:tech@signalwayantibody.com)

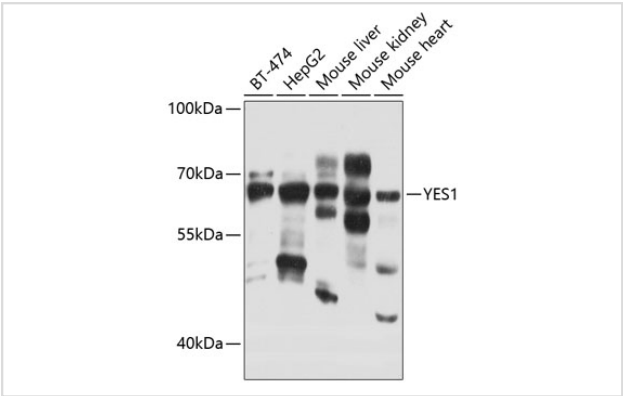
## Description

Product Name	YES1 Rabbit Polyclonal Antibody
Host Species	Rabbit
Clonality	Polyclonal
Isotype	IgG
Purification	Affinity purification
Applications	WB,IF
Species Reactivity	Human,Mouse
Immunogen Description	Recombinant fusion protein of human YES1 (NP_005424.1).
Other Names	YES1;HsT441;P61-YES;Yes;c-yes
Accession No.	Uniprot:P07947GenelD:7525
Calculated MW	60kDa
SDS-PAGE MW	61kDa
Formulation	PBS with 0.02% sodium azide,50% glycerol,pH7.3.
Storage	Store at -20°C. Avoid freeze / thaw cycles.

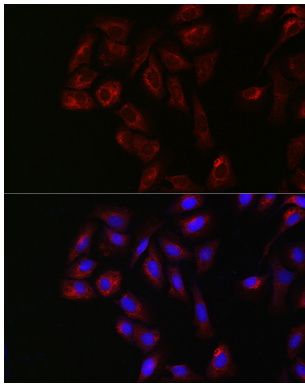
## Application Details

WB 1:500 - 1:1000IF 1:50 - 1:100

## Images



Western blot analysis of extracts of various cell lines, using YES1 antibody.



Immunofluorescence analysis of U2OS cells using YES1 Rabbit pAb.

## Background

This gene is the cellular homolog of the Yamaguchi sarcoma virus oncogene. The encoded protein has tyrosine kinase activity and belongs to the src family of proteins. This gene lies in close proximity to thymidylate synthase gene on chromosome 18, and a corresponding pseudogene has been found on chromosome 22.

Note: This product is for in vitro research use only and is not intended for use in humans or animals.