

DDAH1 Rabbit Polyclonal Antibody

Catalog No: #29245

Package Size: #29245-1 50ul #29245-2 100ul

Orders: order@signalwayantibody.com
Support: tech@signalwayantibody.com

Description

| | |
|-----------------------|--|
| Product Name | DDAH1 Rabbit Polyclonal Antibody |
| Host Species | Rabbit |
| Clonality | Polyclonal |
| Isotype | IgG |
| Purification | Affinity purification |
| Applications | WB,IF |
| Species Reactivity | Human,Mouse,Rat |
| Immunogen Description | Recombinant fusion protein of human DDAH1 (NP_036269.1). |
| Other Names | DDAH1;DDAH;DDAH-1;DDAH1;HEL-S-16 |
| Accession No. | Swiss Prot:O94760GeneID:23576 |
| Calculated MW | 20kDa/31kDa |
| SDS-PAGE MW | 37kDa |
| Formulation | Buffer: PBS with 0.02% sodium azide,50% glycerol,pH7.3. |
| Storage | Store at -20°C. Avoid freeze / thaw cycles. |

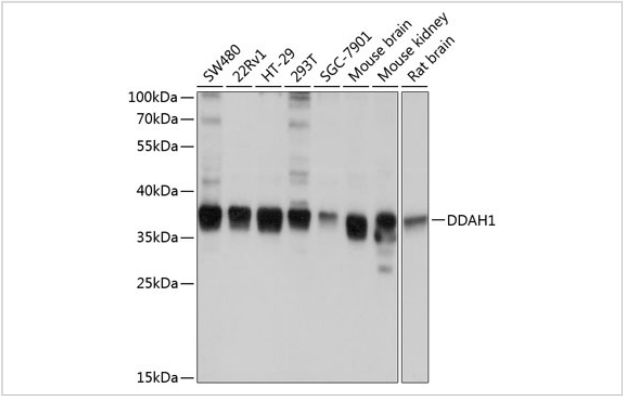
Application Details

WB 1:500 - 1:2000

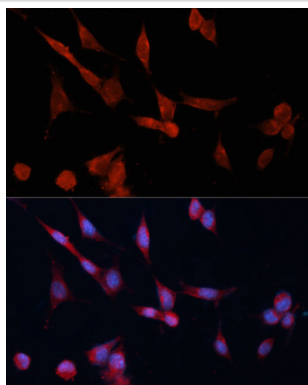
IF 1:50 - 1:200

IP 1:50 - 1:200

Images



Western blot analysis of extracts of various cell lines, using DDAH1 at 1:1000 dilution.



Immunofluorescence analysis of NIH-3T3 cells using DDAH1 Polyclonal at dilution of 1:100 (40x lens). Blue: DAPI for nuclear staining.

Background

This gene belongs to the dimethylarginine dimethylaminohydrolase (DDAH) gene family. The encoded enzyme plays a role in nitric oxide generation by regulating cellular concentrations of methylarginines, which in turn inhibit nitric oxide synthase activity.

Note: This product is for in vitro research use only and is not intended for use in humans or animals.