

LGR5 Rabbit Polyclonal Antibody

Catalog No: #29562

Package Size: #29562-1 50ul #29562-2 100ul

Orders: order@signalwayantibody.comSupport: tech@signalwayantibody.com

Description

Product Name	LGR5 Rabbit Polyclonal Antibody
Host Species	Rabbit
Clonality	Polyclonal
Isotype	IgG
Purification	Affinity purification
Applications	WB,IF,IHC
Species Reactivity	Human,Mouse,Rat
Immunogen Description	Recombinant fusion protein of human LGR5 (NP_003658.1).
Other Names	LGR5;FEX;GPR49;GPR67;GRP49;HG38
Accession No.	Swiss Prot:O75473GenelD:8549
Calculated MW	92kDa/97kDa/99kDa
SDS-PAGE MW	105kDa
Formulation	Buffer: PBS with 0.02% sodium azide,50% glycerol,pH7.3.
Storage	Store at -20°C. Avoid freeze / thaw cycles.

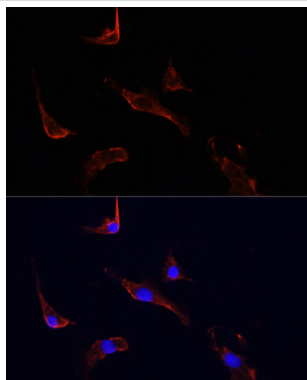
Application Details

WB □ 1:1000 - 1:2000

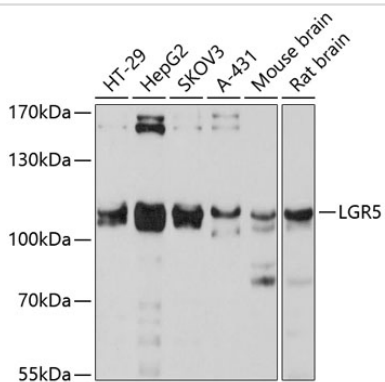
IF □ 1:50 - 1:200

IHC 1:50 - 1:200

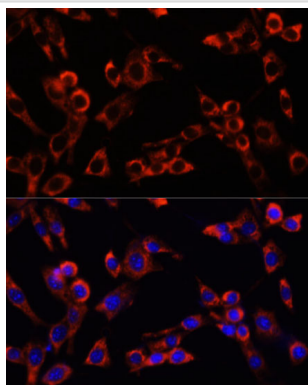
Images



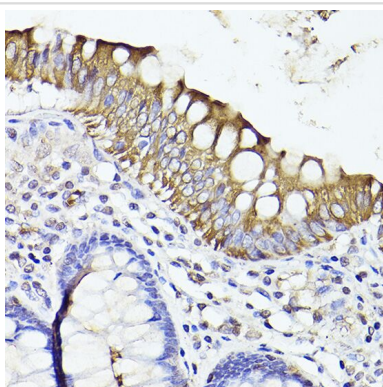
Immunofluorescence analysis of PC12 cells using LGR5 at dilution of 1:100.



Western blot analysis of extracts of various cell lines, using LGR5 at 1:3000 dilution.



Immunofluorescence analysis of NIH/3T3 cells using LGR5 at dilution of 1:100. Blue: DAPI for nuclear staining.



Immunohistochemistry of paraffin-embedded human colon carcinoma using LGR5/GPR49 Rabbit pAb at dilution of 1:200 (40x lens). Perform high pressure antigen retrieval with 10 mM citrate buffer pH 6.0 before commencing with IHC staining protocol.

Background

The protein encoded by this gene is a leucine-rich repeat-containing receptor (LGR) and member of the G protein-coupled, 7-transmembrane receptor (GPCR) superfamily. The encoded protein is a receptor for R-spondins and is involved in the canonical Wnt signaling pathway. This protein plays a role in the formation and maintenance of adult intestinal stem cells during postembryonic development. Several transcript variants encoding different isoforms have been found for this gene.

Note: This product is for in vitro research use only and is not intended for use in humans or animals.