

## PINK1 Rabbit Polyclonal Antibody

Catalog No: #29297



Package Size: #29297-1 50ul #29297-2 100ul

Orders: [order@signalwayantibody.com](mailto:order@signalwayantibody.com)Support: [tech@signalwayantibody.com](mailto:tech@signalwayantibody.com)

## Description

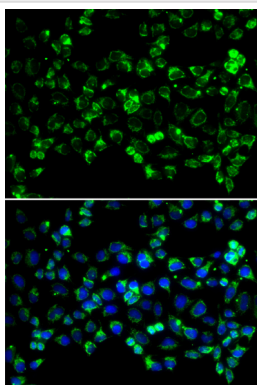
Product Name	PINK1 Rabbit Polyclonal Antibody
Host Species	Rabbit
Clonality	Polyclonal
Isotype	IgG
Purification	Affinity purification
Applications	WB,IF
Species Reactivity	Human,Mouse,Rat
Immunogen Description	Recombinant fusion protein of human PINK1 (NP_115785.1).
Other Names	PINK1;BRPK;PARK6
Accession No.	Swiss Prot:Q9BXM7GeneID:65018
Calculated MW	30kDa/62kDa
SDS-PAGE MW	50kDa
Formulation	Buffer: PBS with 0.02% sodium azide,50% glycerol,pH7.3.
Storage	Store at -20°C. Avoid freeze / thaw cycles.

## Application Details

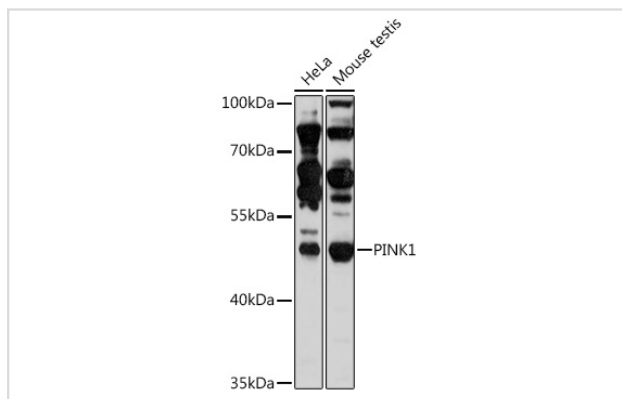
WB□1:500 - 1:2000

IF□1:50 - 1:200

## Images



Immunofluorescence analysis of HeLa cells using PINK1 .  
Blue: DAPI for nuclear staining.



Western blot analysis of extracts of various cell lines, using PINK1 at 1:1000 dilution.

## Background

This gene encodes a serine/threonine protein kinase that localizes to mitochondria. It is thought to protect cells from stress-induced mitochondrial dysfunction. Mutations in this gene cause one form of autosomal recessive early-onset Parkinson disease.

## Published Papers

el at., Dietary High-Fat Promotes Cognitive Impairment by Suppressing MitophagyInOxid Med Cell LongevOn2023 Jan 21byOxid Med Cell Longev et al..PMID:36718278, , (2023)

[PMID:36718278](#)

el at., Study of mitophagy and ATP-related metabolomics based on  $\beta$ -amyloid levels in Alzheimer's disease. In Exp Cell Res on 2020 Nov 1 by Xiaomin Xiong, Shijie Li, et al..PMID: 32905804, , (2020)

[PMID:32905804](#)

**Note:** This product is for in vitro research use only and is not intended for use in humans or animals.