

PPP2R5D Rabbit Polyclonal Antibody

Catalog No: #28000



Orders: order@signalwayantibody.com
Support: tech@signalwayantibody.com

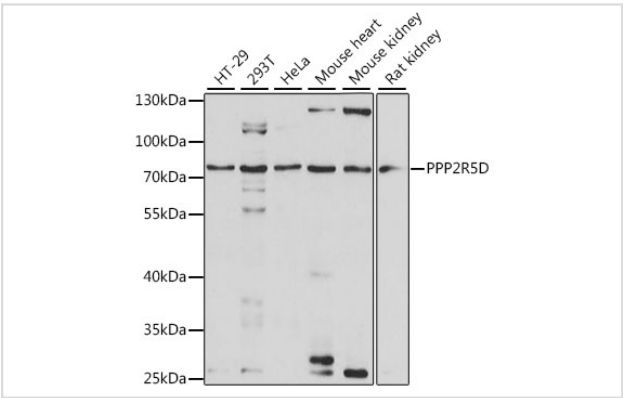
Description

Product Name	PPP2R5D Rabbit Polyclonal Antibody
Host Species	Rabbit
Clonality	Polyclonal
Isotype	IgG
Purification	Affinity purification
Applications	WB,IHC,IF
Species Reactivity	Human,Mouse,Rat
Immunogen Description	A synthetic peptide of human PPP2R5D (NP_006236.1).
Other Names	PPP2R5D;B56D;MRD35;B56delta
Accession No.	Swiss Prot:Q14738GeneID:5528
Calculated MW	58kDa/66kDa/69kDa
SDS-PAGE MW	80kDa
Formulation	Buffer: PBS with 0.02% sodium azide,50% glycerol,pH7.3.
Storage	Store at -20°C. Avoid freeze / thaw cycles.

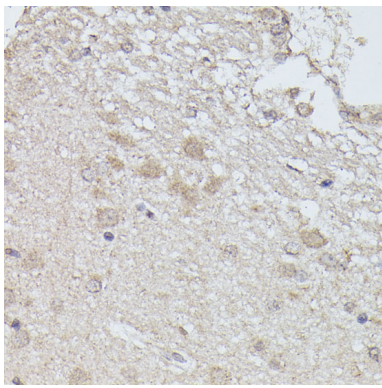
Application Details

WB□1:500 - 1:2000
IHC□1:100 - 1:200
IF□1:50 - 1:200

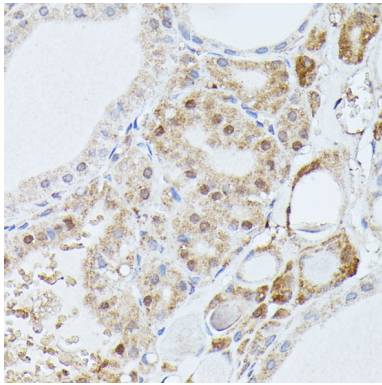
Images



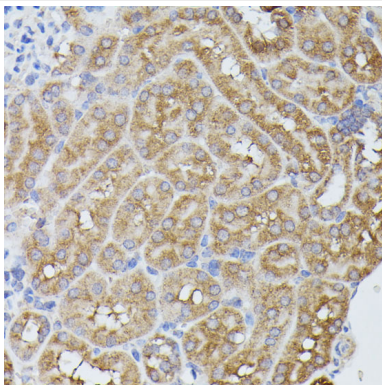
Western blot analysis of extracts of various cell lines, using PPP2R5D at 1:1000 dilution.



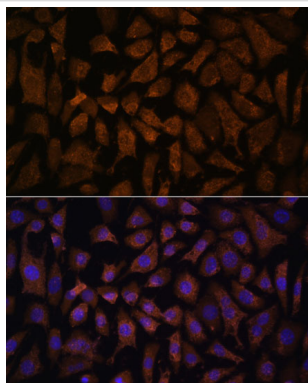
Immunohistochemistry of paraffin-embedded rat brain using PPP2R5D at dilution of 1:100 (40x lens).



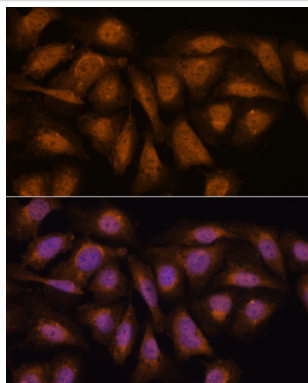
Immunohistochemistry of paraffin-embedded human thyroid cancer using PPP2R5D at dilution of 1:100 (40x lens).



Immunohistochemistry of paraffin-embedded mouse kidney using PPP2R5D at dilution of 1:100 (40x lens).



Immunofluorescence analysis of L929 cells using PPP2R5D at dilution of 1:100. Blue: DAPI for nuclear staining.



Immunofluorescence analysis of U-2 OS cells using PPP2R5D at dilution of 1:100. Blue: DAPI for nuclear staining.

Background

The product of this gene belongs to the phosphatase 2A regulatory subunit B family. Protein phosphatase 2A is one of the four major Ser/Thr phosphatases, and it is implicated in the negative control of cell growth and division. It consists of a common heteromeric core enzyme, which is composed of a catalytic subunit and a constant regulatory subunit, that associates with a variety of regulatory subunits. The B regulatory subunit might modulate substrate selectivity and catalytic activity. This gene encodes a delta isoform of the regulatory subunit B56 subfamily. Alternatively spliced transcript variants encoding different isoforms have been identified.

Note: This product is for in vitro research use only and is not intended for use in humans or animals.