

WBP11 Rabbit Polyclonal Antibody

Catalog No: #54146

Package Size: #54146-1 50ul #54146-2 100ul

Orders: order@signalwayantibody.com
Support: tech@signalwayantibody.com

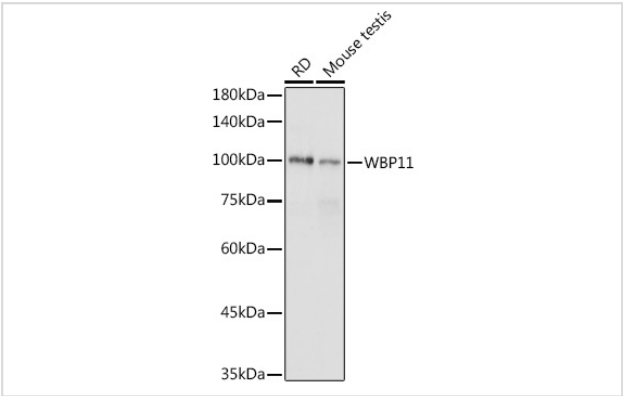
Description

Product Name	WBP11 Rabbit Polyclonal Antibody
Host Species	Rabbit
Clonality	Polyclonal
Isotype	IgG
Purification	Affinity purification
Applications	WB,IHC,IF
Species Reactivity	Human,Mouse,Rat
Immunogen Description	Recombinant fusion protein of human WBP11 (NP_057396.1).
Other Names	WBP11;NPWBP;PPP1R165;SIPP1;WBP-11
Accession No.	Uniprot:Q9Y2W2GeneID:51729
Calculated MW	69kDa
SDS-PAGE MW	115KDa
Formulation	PBS with 0.02% sodium azide,50% glycerol,pH7.3.
Storage	Store at -20°C. Avoid freeze / thaw cycles.

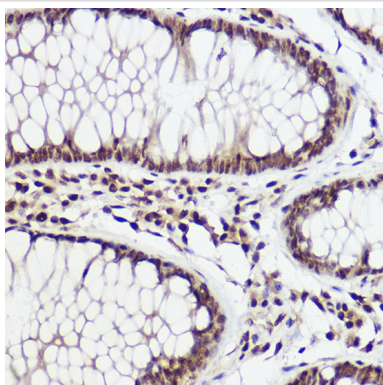
Application Details

WB 1:500 - 1:2000IHC 1:50 - 1:200IF 1:50 - 1:200

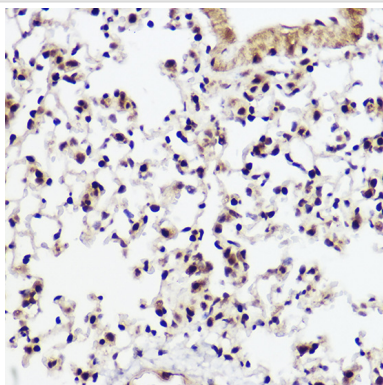
Images



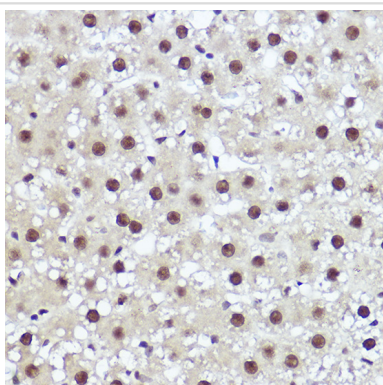
Western blot analysis of extracts of various cell lines, using WBP11 antibody.



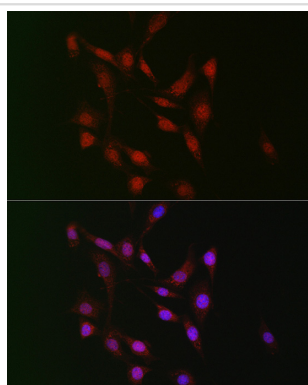
Immunohistochemistry of paraffin-embedded human colon carcinoma using WBP11 Rabbit pAb.



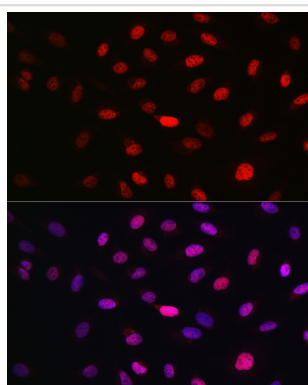
Immunohistochemistry of paraffin-embedded mouse lung using WBP11 Rabbit pAb.



Immunohistochemistry of paraffin-embedded rat liver using WBP11 Rabbit pAb.



Immunofluorescence analysis of NIH/3T3 cells using WBP11 Rabbit pAb.



Immunofluorescence analysis of U2OS cells using WBP11 Rabbit pAb.

Background

This gene encodes a nuclear protein, which colocalizes with mRNA splicing factors and intermediate filament-containing perinuclear networks. This protein has 95% amino acid sequence identity to the mouse Wbp11 protein. It contains two proline-rich regions that bind to the WW domain of Npw38, a nuclear protein, and thus this protein is also called Npw38-binding protein NpwBP. The Npw38-NpwBP complex may function as a component of an mRNA factory in the nucleus.

Note: This product is for in vitro research use only and is not intended for use in humans or animals.