

HSPA4L Rabbit Polyclonal Antibody

Catalog No: #54447



Package Size: #54447-1 50ul #54447-2 100ul

Orders: order@signalwayantibody.com
Support: tech@signalwayantibody.com

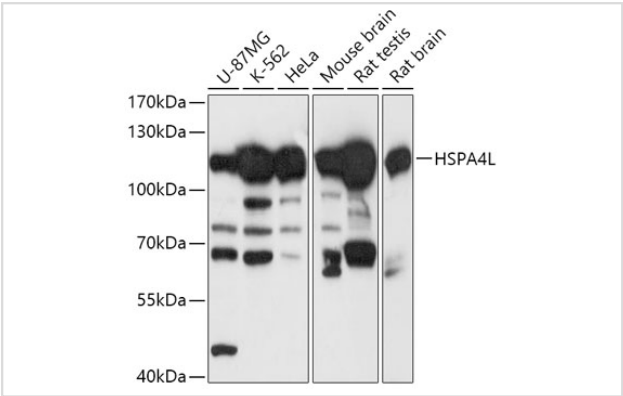
Description

Product Name	HSPA4L Rabbit Polyclonal Antibody
Host Species	Rabbit
Clonality	Polyclonal
Isotype	IgG
Purification	Affinity purification
Applications	WB,IF
Species Reactivity	Human,Mouse,Rat
Immunogen Description	Recombinant fusion protein of human HSPA4L (NP_055093.2).
Other Names	APG-1;HSPH3;Osp94;HSPA4L
Accession No.	Swiss Prot:O95757GeneID:22824
Calculated MW	—
SDS-PAGE MW	115kDa
Formulation	Buffer: PBS with 0.02% sodium azide,50% glycerol,pH7.3.
Storage	Store at -20°C. Avoid freeze / thaw cycles.

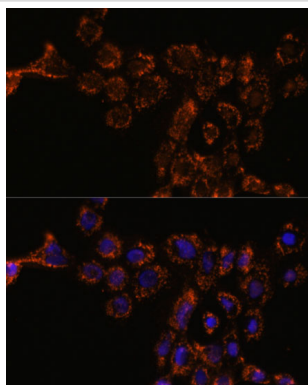
Application Details

WB 1:500 - 1:2000IF 1:50 - 1:200

Images



Western blot analysis of extracts of various cell lines, using HSPA4L at 1:1000 dilution.



Immunofluorescence analysis of A431 cells using HSPA4L at dilution of 1:100. Blue: DAPI for nuclear staining.

Background

The protein encoded by this gene is heat shock inducible and may act as a chaperone. The encoded protein can protect the heat-shocked cell against the harmful effects of aggregated proteins. This gene is highly expressed in leukemia cells and may be a good target for therapeutic intervention. Several transcripts encoding different isoforms have been found for this gene. [provided by RefSeq, Dec 2015]

Note: This product is for in vitro research use only and is not intended for use in humans or animals.