

# LONP1 Rabbit Polyclonal Antibody

Catalog No: #54845



Package Size: #54845-1 50ul #54845-2 100ul

Orders: [order@signalwayantibody.com](mailto:order@signalwayantibody.com)  
Support: [tech@signalwayantibody.com](mailto:tech@signalwayantibody.com)

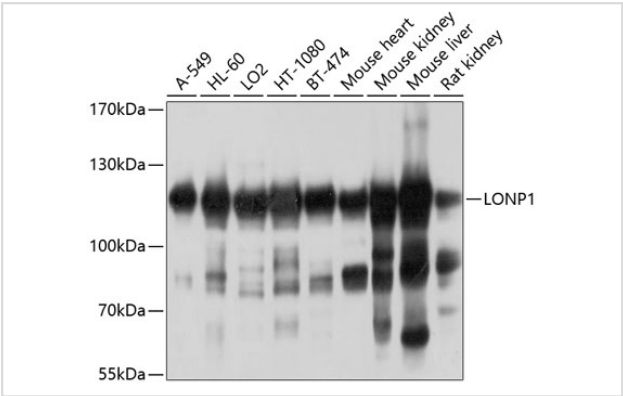
## Description

Product Name	LONP1 Rabbit Polyclonal Antibody
Host Species	Rabbit
Clonality	Polyclonal
Isotype	IgG
Purification	Affinity purification
Applications	WB,IHC,IF
Species Reactivity	Human,Mouse,Rat
Immunogen Description	Recombinant fusion protein of human LONP1 (NP_004784.2).
Other Names	LONP1;CODASS;LON;LONP;LonHS;PIM1;PRSS15;hLON
Accession No.	Uniprot:P36776GenelD:9361
Calculated MW	85kDa/100kDa/106kDa
SDS-PAGE MW	106kDa
Formulation	PBS with 0.02% sodium azide,50% glycerol,pH7.3.
Storage	Store at -20°C. Avoid freeze / thaw cycles.

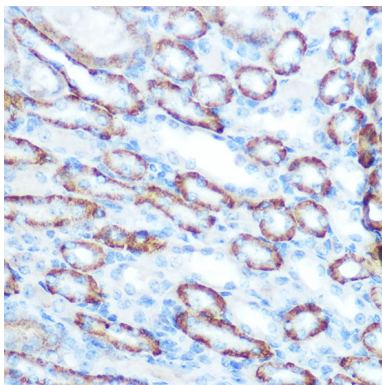
## Application Details

WB 1:500 - 1:2000IHC 1:50 - 1:200IF 1:50 - 1:200

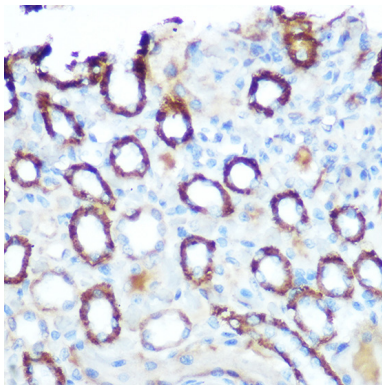
## Images



Western blot analysis of extracts of various cell lines, using LONP1 antibody.



Immunohistochemistry of paraffin-embedded mouse kidney using LONP1 Rabbit pAb.



Immunohistochemistry of paraffin-embedded rat kidney using LONP1 Rabbit pAb.

## Background

This gene encodes a mitochondrial matrix protein that belongs to the Lon family of ATP-dependent proteases. This protein mediates the selective degradation of misfolded, unassembled or oxidatively damaged polypeptides in the mitochondrial matrix. It may also have a chaperone function in the assembly of inner membrane protein complexes, and participate in the regulation of mitochondrial gene expression and maintenance of the integrity of the mitochondrial genome. Decreased expression of this gene has been noted in a patient with hereditary spastic paraplegia (PMID:18378094). Alternatively spliced transcript variants have been found for this gene.

Note: This product is for in vitro research use only and is not intended for use in humans or animals.