

CXCR5 Rabbit Polyclonal Antibody

Catalog No: #29298



Package Size: #29298-1 50ul #29298-2 100ul

Orders: order@signalwayantibody.com
Support: tech@signalwayantibody.com

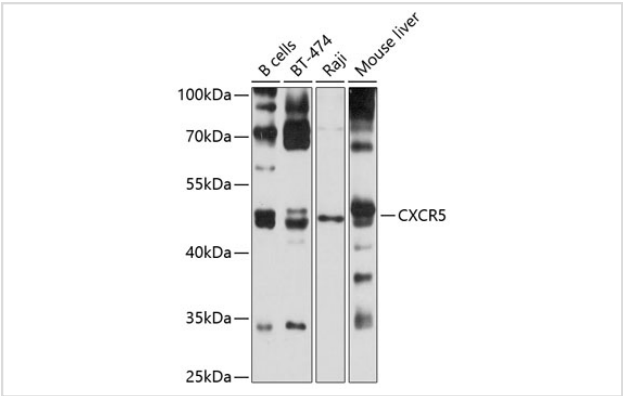
Description

Product Name	CXCR5 Rabbit Polyclonal Antibody
Host Species	Rabbit
Clonality	Polyclonal
Isotype	IgG
Purification	Affinity purification
Applications	WB
Species Reactivity	Human,Mouse
Immunogen Description	A synthetic peptide of human CXCR5 (NP_001707.1).
Other Names	CXCR5;BLR1;CD185;MDR15
Accession No.	Uniprot:P32302GenelD:643
Calculated MW	36kDa/41kDa
SDS-PAGE MW	45kDa
Formulation	PBS with 0.02% sodium azide,50% glycerol,pH7.3.
Storage	Store at -20°C. Avoid freeze / thaw cycles.

Application Details

WB 1:500 - 1:2000

Images



Western blot analysis of extracts of various cell lines, using CXCR5 antibody.

Background

This gene encodes a multi-pass membrane protein that belongs to the CXC chemokine receptor family. It is expressed in mature B-cells and Burkitt's lymphoma. This cytokine receptor binds to B-lymphocyte chemoattractant (BLC), and is involved in B-cell migration into B-cell follicles of spleen and Peyer patches. Alternatively spliced transcript variants encoding different isoforms have been described for this gene.

Published Papers

et al., Single-cell landscape and clinical outcomes of infiltrating B cells in colorectal cancer In Immunology On 2023 Jan by Jie Xia , Zhangjuan Xie et al.. PMID:36082430, (2023)

[PMID:36082430](#)

Note: This product is for in vitro research use only and is not intended for use in humans or animals.