

# OSM Rabbit Polyclonal Antibody

Catalog No: #54976



Package Size: #54976-1 50ul #54976-2 100ul

Orders: [order@signalwayantibody.com](mailto:order@signalwayantibody.com)  
Support: [tech@signalwayantibody.com](mailto:tech@signalwayantibody.com)

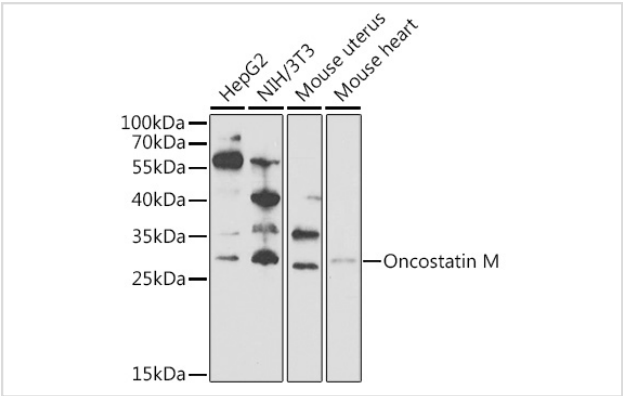
## Description

Product Name	OSM Rabbit Polyclonal Antibody
Host Species	Rabbit
Clonality	Polyclonal
Isotype	IgG
Purification	Affinity purification
Applications	WB,IF
Species Reactivity	Human,Mouse,Rat
Immunogen Description	Recombinant fusion protein of human Oncostatin M (NP_065391.1).
Other Names	OSM
Accession No.	Uniprot:P13725GenelD:5008
Calculated MW	28kDa
SDS-PAGE MW	28kDa
Formulation	PBS with 0.02% sodium azide,50% glycerol,pH7.3.
Storage	Store at -20°C. Avoid freeze / thaw cycles.

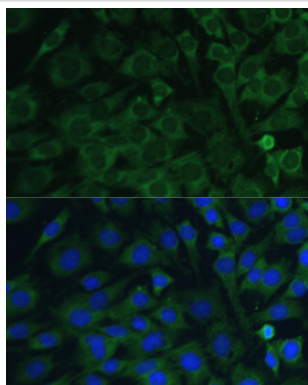
## Application Details

WB 1:500 - 1:2000IF 1:50 - 1:200

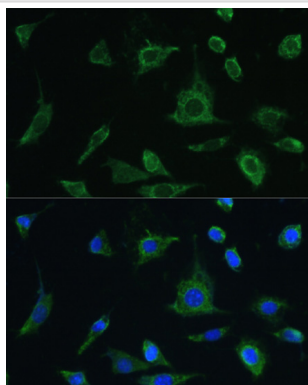
## Images



Western blot analysis of extracts of various cell lines, using Oncostatin M Antibody.



Immunofluorescence analysis of C6 cells using Oncostatin M antibody.



Immunofluorescence analysis of L-929 cells using Oncostatin M antibody.

## Background

This gene encodes a member of the leukemia inhibitory factor/oncostatin-M (LIF/OSM) family of proteins. The encoded preproprotein is proteolytically processed to generate the mature protein. This protein is a secreted cytokine and growth regulator that inhibits the proliferation of a number of tumor cell lines. This protein also regulates the production of other cytokines, including interleukin 6, granulocyte-colony stimulating factor and granulocyte-macrophage colony stimulating factor in endothelial cells. This gene and the related gene, leukemia inhibitory factor, also present on chromosome 22, may have resulted from the duplication of a common ancestral gene. Alternative splicing results in multiple transcript variants, at least one of which encodes an isoform that is proteolytically processed.

Note: This product is for in vitro research use only and is not intended for use in humans or animals.