

LHCGR Rabbit Polyclonal Antibody

Catalog No: #29284



Package Size: #29284-1 50ul #29284-2 100ul

Orders: order@signalwayantibody.com
Support: tech@signalwayantibody.com

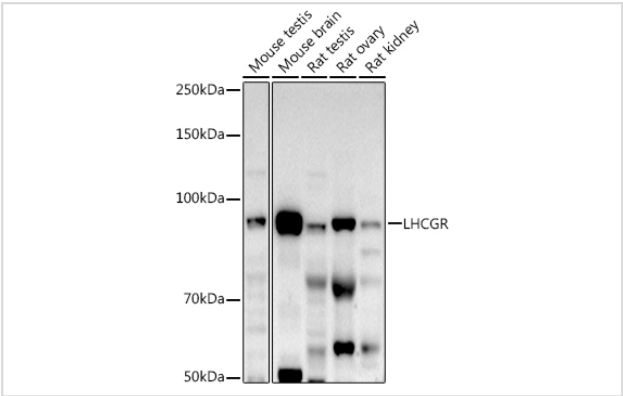
Description

Product Name	LHCGR Rabbit Polyclonal Antibody
Host Species	Rabbit
Clonality	Polyclonal
Isotype	IgG
Purification	Affinity purification
Applications	WB,IF
Species Reactivity	Human,Mouse,Rat
Immunogen Description	Recombinant fusion protein of human LHCGR (NP_000224.2).
Other Names	LHCGR;HHG;LCGR;LGR2;LH/CG-R;LH/CGR;LHR;LHRHR;LSH-R;ULG5
Accession No.	Uniprot:P22888GenelD:3973
Calculated MW	71kDa/78kDa
SDS-PAGE MW	85KDa
Formulation	PBS with 0.02% sodium azide,50% glycerol,pH7.3.
Storage	Store at -20°C. Avoid freeze / thaw cycles.

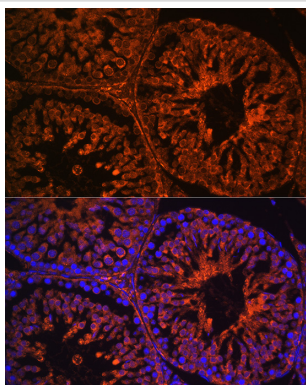
Application Details

WB 1:200 - 1:2000IF 1:50 - 1:200

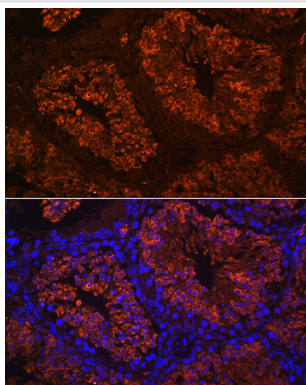
Images



Western blot analysis of extracts of various cell lines, using LHCGR antibody.



Immunofluorescence analysis of rat testis using LHCGR Rabbit pAb.



Immunofluorescence analysis of mouse testis using LHCGR Rabbit pAb.

Background

This gene encodes the receptor for both luteinizing hormone and choriogonadotropin. This receptor belongs to the G-protein coupled receptor 1 family, and its activity is mediated by G proteins which activate adenylate cyclase. Mutations in this gene result in disorders of male secondary sexual character development, including familial male precocious puberty, also known as testotoxicosis, hypogonadotropic hypogonadism, Leydig cell adenoma with precocious puberty, and male pseudohermaphroditism with Leydig cell hypoplasia.

Note: This product is for in vitro research use only and is not intended for use in humans or animals.