

Bcl-xL Antibody

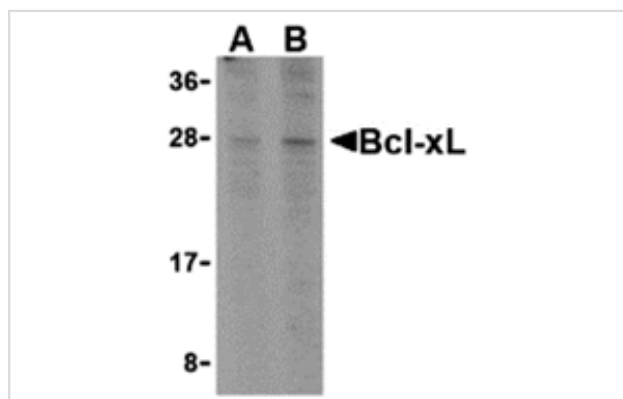
Catalog No: #24247

Orders: order@signalwayantibody.comSupport: tech@signalwayantibody.com

Description

Product Name	Bcl-xL Antibody
Host Species	Rabbit
Clonality	Polyclonal
Purification	Ion exchange chromatography purified
Applications	ELISA WB
Species Reactivity	Hu
Immunogen Type	Peptide
Immunogen Description	Raised against a peptide corresponding to 14 amino acids near the carboxy terminus of human Bcl-xL.
Target Name	Bcl-xL
Accession No.	CAA80661
Concentration	1mg/ml
Formulation	Supplied in PBS containing 0.02% sodium azide.
Storage	Can be stored at -20°C, stable for one year. As with all antibodies care should be taken to avoid repeated freeze thaw cycles. Antibodies should not be exposed to prolonged high temperatures.

Images



Western blot analysis of Bcl-xL in A549 cell lysates with Bcl-xL antibody at (A) 1 and (B) 2 ug/mL.

Background

Apoptosis plays a major role in normal organism development, tissue homeostasis, and removal of damaged cells. Disruption of this process has been implicated in a variety of diseases such as cancer. Bcl-xL is a member of the Bcl-2 family of proteins that are critical regulators of apoptosis. These can be divided into two classes: those that inhibit apoptosis and those that promote cell death. Bcl-xL is an anti-apoptotic mitochondrial protein related to Bcl-w and the major transcript of the bcl-x gene. Its high expression in tumors is correlated with advanced disease and poor prognosis. Bcl-xL expression level increases in response to several stimuli such as ionizing radiation and treatment with chemotherapeutic agents.

Published Papers

el at., BAD overexpression inhibits cell growth and induces apoptosis via mitochondrial-dependent pathway in non-small cell lung cancer. In Cancer Cell Int on 2013 Jun 1 by Jiang L, Luo M, et al.. PMID:23725574, , (2013)

Note: This product is for in vitro research use only and is not intended for use in humans or animals.