

# WBSCR22 Rabbit Polyclonal Antibody

Catalog No: #55177



Package Size: #55177-1 50ul #55177-2 100ul

Orders: [order@signalwayantibody.com](mailto:order@signalwayantibody.com)  
Support: [tech@signalwayantibody.com](mailto:tech@signalwayantibody.com)

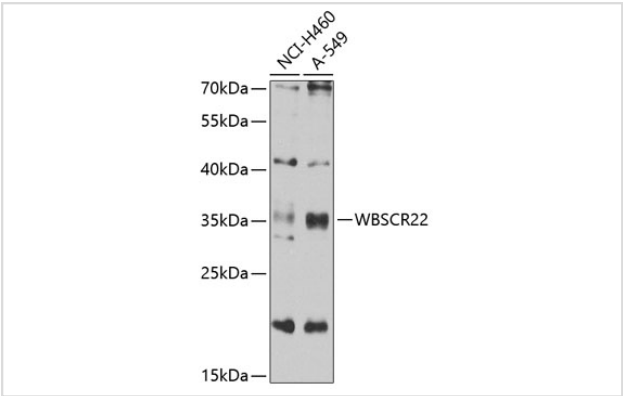
## Description

Product Name	WBSCR22 Rabbit Polyclonal Antibody
Host Species	Rabbit
Clonality	Polyclonal
Isotype	IgG
Purification	Affinity purification
Applications	WB,IF
Species Reactivity	Human,Rat
Immunogen Description	Recombinant fusion protein of human WBSCR22 (NP_059998.2).
Other Names	BUD23;HASJ4442;HUSY-3;MERM1;PP3381;WBMT;WBSCR22
Accession No.	Uniprot:O43709GeneID:114049
Calculated MW	24kDa/31kDa/33kDa
SDS-PAGE MW	36kDa
Formulation	PBS with 0.02% sodium azide,50% glycerol,pH7.3.
Storage	Store at -20°C. Avoid freeze / thaw cycles.

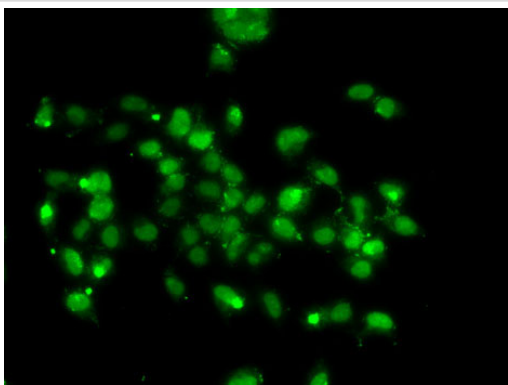
## Application Details

WB 1:500 - 1:2000IF 1:50 - 1:100

## Images



Western blot analysis of extracts of various cell lines, using WBSCR22 antibody.



Immunofluorescence analysis of A-549 cells using WBSCR22 antibody.

## Background

This gene encodes a protein containing a nuclear localization signal and an S-adenosyl-L-methionine binding motif typical of methyltransferases, suggesting that the encoded protein may act on DNA methylation. This gene is deleted in Williams syndrome, a multisystem developmental disorder caused by the deletion of contiguous genes at 7q11.23. Alternatively spliced transcript variants have been found.

Note: This product is for in vitro research use only and is not intended for use in humans or animals.