

UBQLN2 Rabbit Polyclonal Antibody

Catalog No: #55604

Package Size: #55604-1 50ul #55604-2 100ul

Orders: order@signalwayantibody.com
Support: tech@signalwayantibody.com

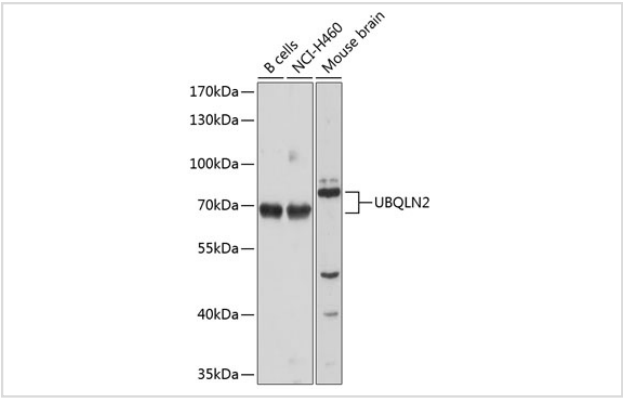
Description

Product Name	UBQLN2 Rabbit Polyclonal Antibody
Host Species	Rabbit
Clonality	Polyclonal
Isotype	IgG
Purification	Affinity purification
Applications	WB,IHC,IF
Species Reactivity	Human,Mouse
Immunogen Description	Recombinant fusion protein of human UBQLN2 (NP_038472.2).
Other Names	UBQLN2;ALS15;CHAP1;DSK2;HRIHFB2157;N4BP4;PLIC2
Accession No.	Uniprot:Q9UHD9GeneID:29978
Calculated MW	65kDa
SDS-PAGE MW	70kDa
Formulation	PBS with 0.02% sodium azide,50% glycerol,pH7.3.
Storage	Store at -20°C. Avoid freeze / thaw cycles.

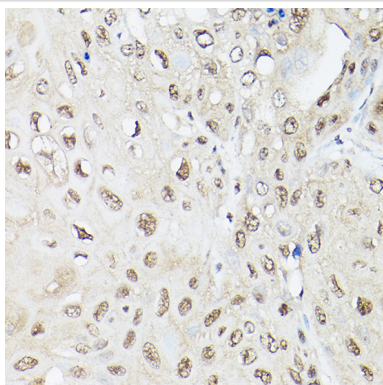
Application Details

WB 1:200 - 1:2000IHC 1:50 - 1:200IF 1:50 - 1:200

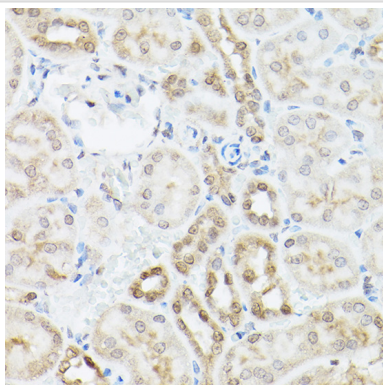
Images



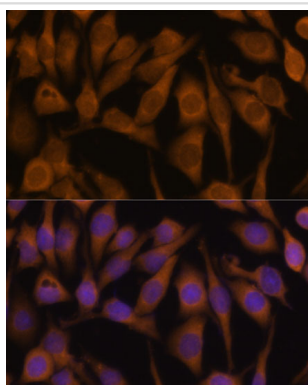
Western blot analysis of extracts of various cell lines, using UBQLN2 antibody.



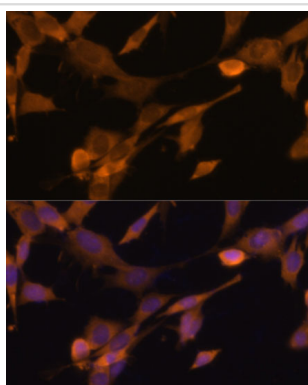
Immunohistochemistry of paraffin-embedded human esophageal cancer using UBQLN2 Rabbit pAb.



Immunohistochemistry of paraffin-embedded mouse kidney using UBQLN2 Rabbit pAb.



Immunofluorescence analysis of HeLa cells using UBQLN2 Polyclonal Antibody.



Immunofluorescence analysis of NIH-3T3 cells using UBQLN2 Polyclonal Antibody.

Background

This gene encodes an ubiquitin-like protein (ubiquilin) that shares high degree of similarity with related products in yeast, rat and frog. Ubiquilins contain a N-terminal ubiquitin-like domain and a C-terminal ubiquitin-associated domain. They physically associate with both proteasomes and ubiquitin ligases; and thus, are thought to functionally link the ubiquitination machinery to the proteasome to affect in vivo protein degradation. This ubiquilin has also been shown to bind the ATPase domain of the Hsp70-like Stch protein.

Note: This product is for in vitro research use only and is not intended for use in humans or animals.