

# OTC Rabbit Polyclonal Antibody

Catalog No: #55620



Package Size: #55620-1 50ul #55620-2 100ul

Orders: [order@signalwayantibody.com](mailto:order@signalwayantibody.com)Support: [tech@signalwayantibody.com](mailto:tech@signalwayantibody.com)

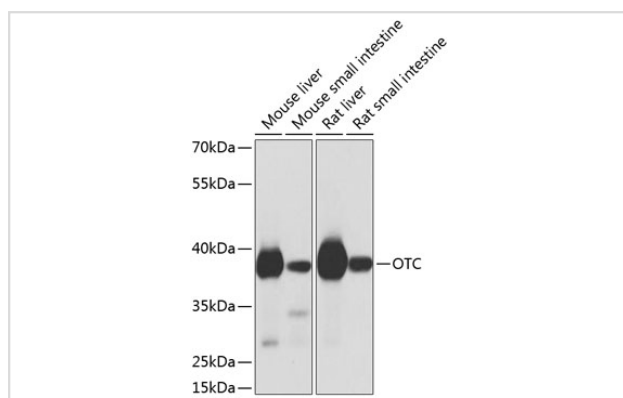
## Description

Product Name	OTC Rabbit Polyclonal Antibody
Host Species	Rabbit
Clonality	Polyclonal
Isotype	IgG
Purification	Affinity purification
Applications	WB
Species Reactivity	Human,Mouse,Rat
Immunogen Description	Recombinant fusion protein of human OTC (NP_000522.3).
Other Names	OTC;OCTD
Accession No.	Uniprot:P00480GeneID:5009
Calculated MW	39kDa
SDS-PAGE MW	38kDa
Formulation	PBS with 0.02% sodium azide,50% glycerol,pH7.3.
Storage	Store at -20°C. Avoid freeze / thaw cycles.

## Application Details

WB □ 1:1000 - 1:4000

## Images



Western blot analysis of extracts of various cell lines, using OTC antibody.

## Background

This nuclear gene encodes a mitochondrial matrix enzyme. Missense, nonsense, and frameshift mutations in this enzyme lead to ornithine transcarbamylase deficiency, which causes hyperammonemia. Since the gene for this enzyme maps close to that for Duchenne muscular dystrophy, it may play a role in that disease also.

---

Note: This product is for in vitro research use only and is not intended for use in humans or animals.