

## RIP (phospho-Ser166) rabbit pAb

Catalog No: #13557

Package Size: #13557-1 50ul #13557-2 100ul

Orders: [order@signalwayantibody.com](mailto:order@signalwayantibody.com)Support: [tech@signalwayantibody.com](mailto:tech@signalwayantibody.com)

## Description

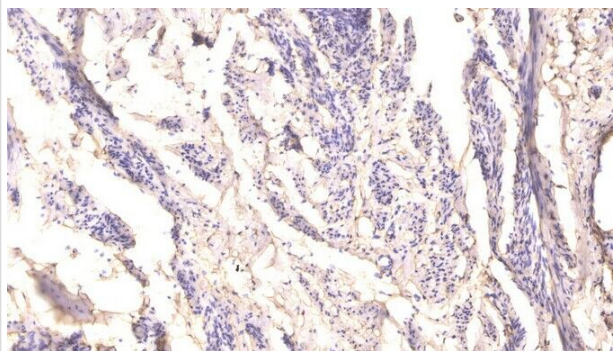
Product Name	RIP (phospho-Ser166) rabbit pAb
Host Species	Rabbit
Purification	The antibody was affinity-purified from rabbit serum by affinity-chromatography using specific immunogen.
Applications	WB IHC
Species Reactivity	Human,Mouse,Rat
Specificity	This antibody detects endogenous levels of Human RIP (phospho-Ser166)
Immunogen Description	Synthesized phospho peptide around human RIP (Ser166)
Other Names	Receptor-interacting serine/threonine-protein kinase 1 (EC 2.7.11.1) (Cell death protein RIP) (Receptor-interacting protein 1) (RIP-1) (Serine/threonine-protein kinase RIP)
Accession No.	Swiss Prot:Q13546GeneID:8737
SDS-PAGE MW	73
Concentration	1 mg/ml
Formulation	Liquid in PBS containing 50% glycerol, 0.5% BSA and 0.02% sodium azide.
Storage	-20°C/1

## Application Details

WB 1:1000-2000

IHC: 1:50-300

## Images



Immunohistochemical analysis of paraffin-embedded human cervical carcinoma. Antibody was diluted at 1:200(4° overnight). Tris-EDTA,pH9.0 was used for antigen retrieval. Secondary antibody was diluted at 1:200(room temperature, 45min).

Note: This product is for in vitro research use only and is not intended for use in humans or animals.